

1. LOCAL PARK 6 , AUSTRAL - DESIGN RATIONALE & PRECEDENTS

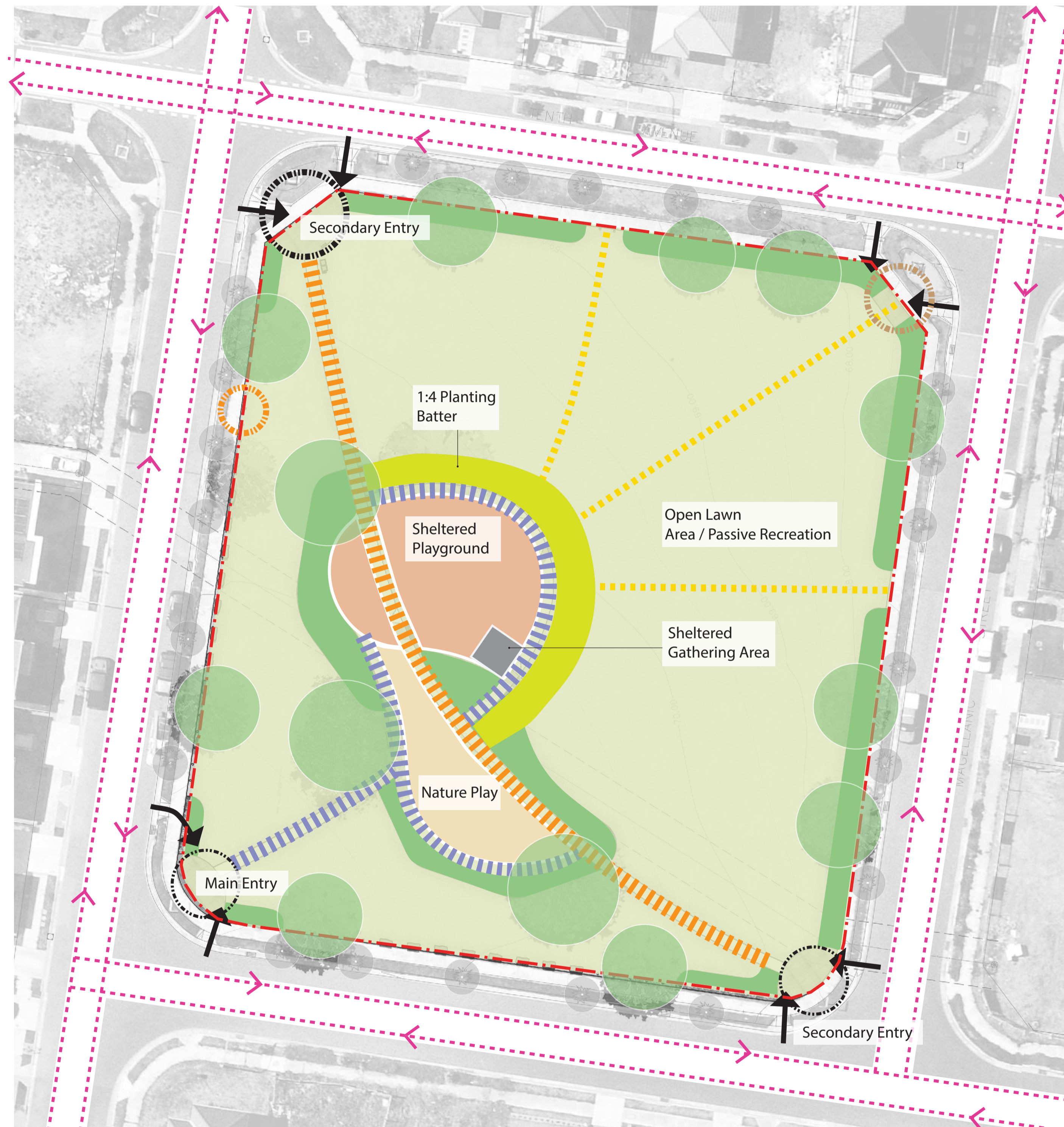


Figure 13 - Design Rationale Diagram

0 12 5 10m
SCALE : 1:300@A1

LEGEND

- | | | | |
|---|--------------------|---------------------|--------------------|
| Site Boundary | Park Entry | Secondary Path 1.5m | Perimeter Planting |
| Driving Direction | Entry Ramp | Primary Path 1.5m | Proposed Trees |
| Informal Access Across Lawn To Playground | Maintenance Access | Informal Entry | |



Figure 14 - Open lawn area



Figure 15 - Sheltered playground

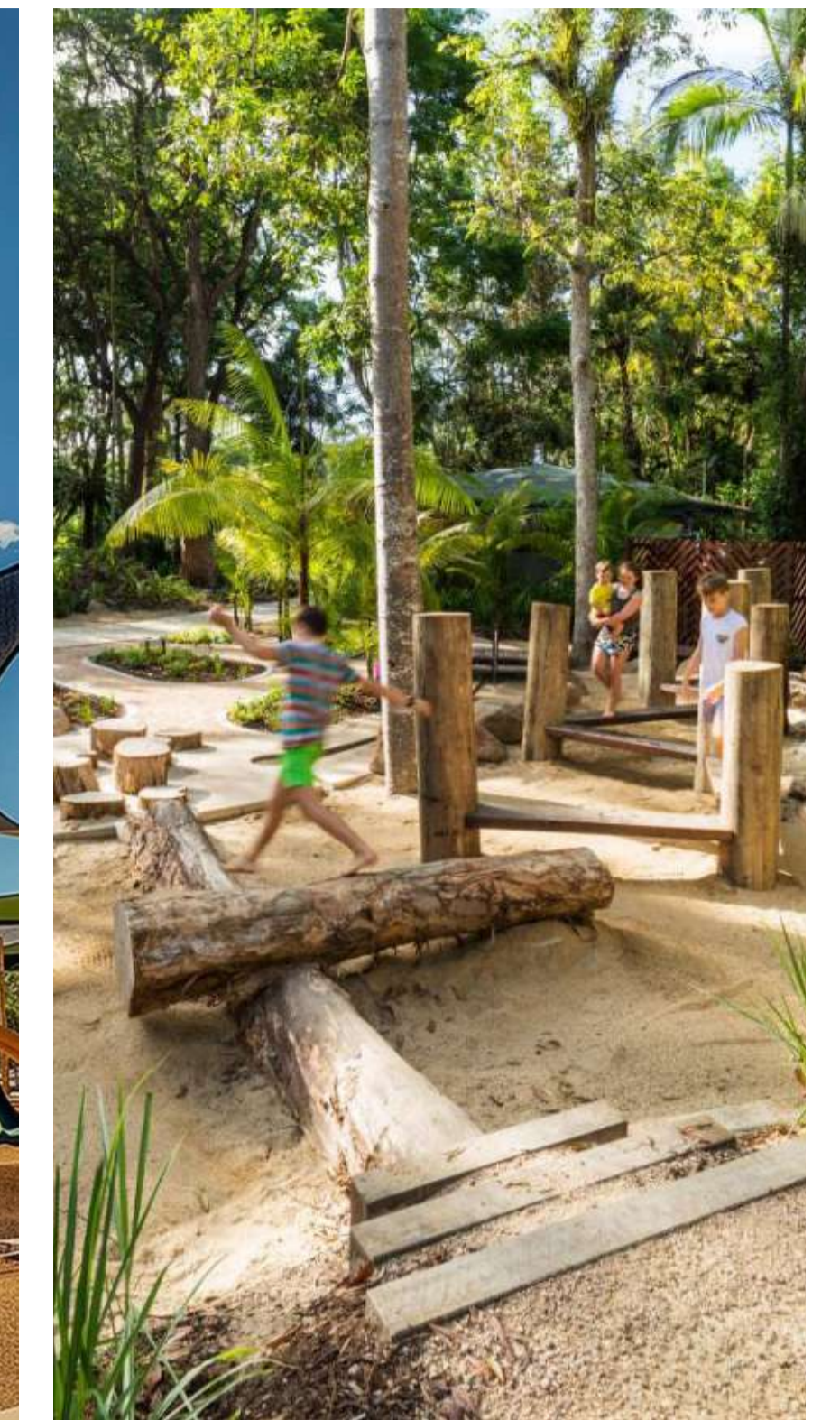


Figure 16 - Nature Play



Figure 17 - Concrete footpath

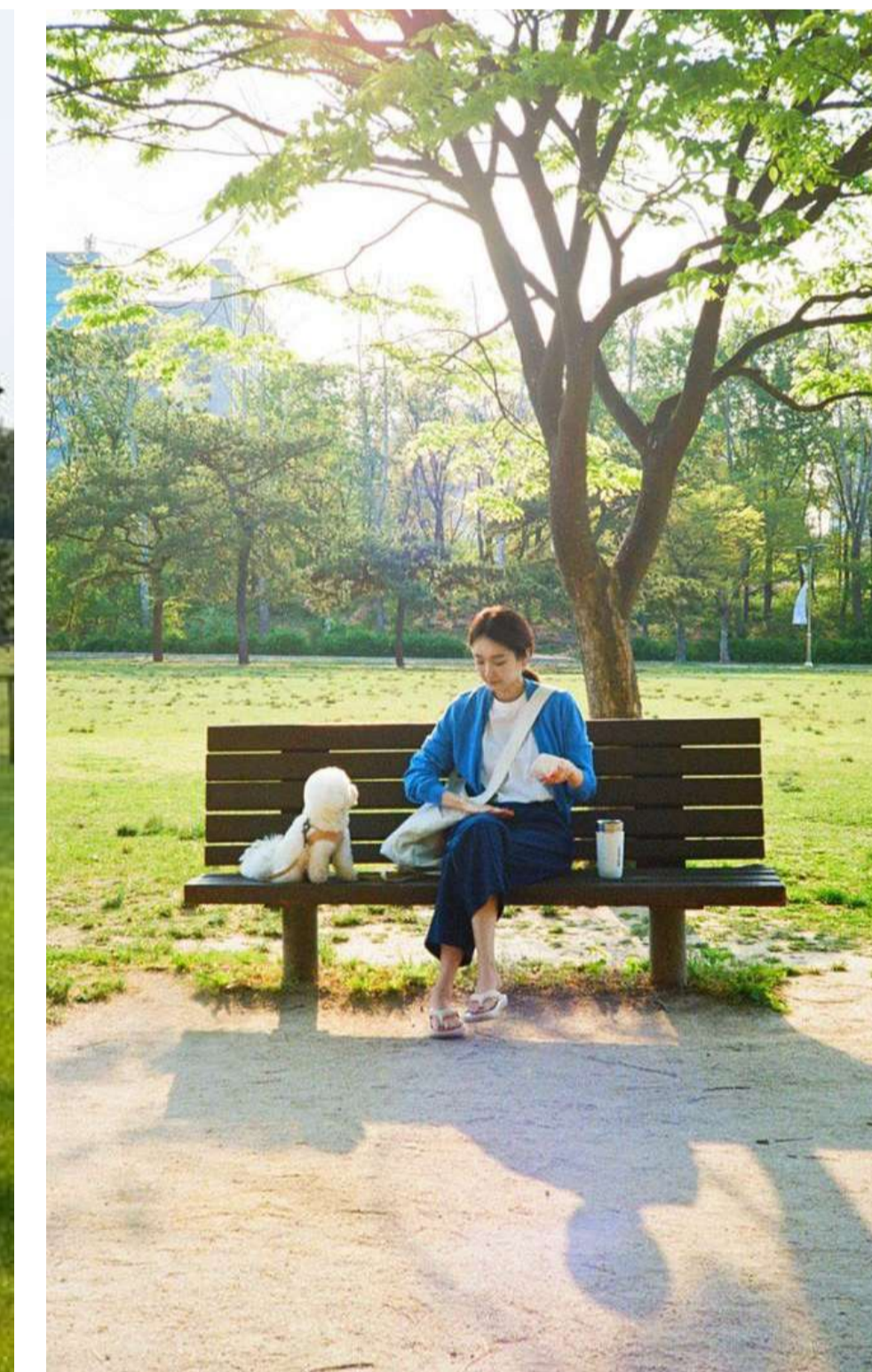


Figure 18 - Bench under canopy tree

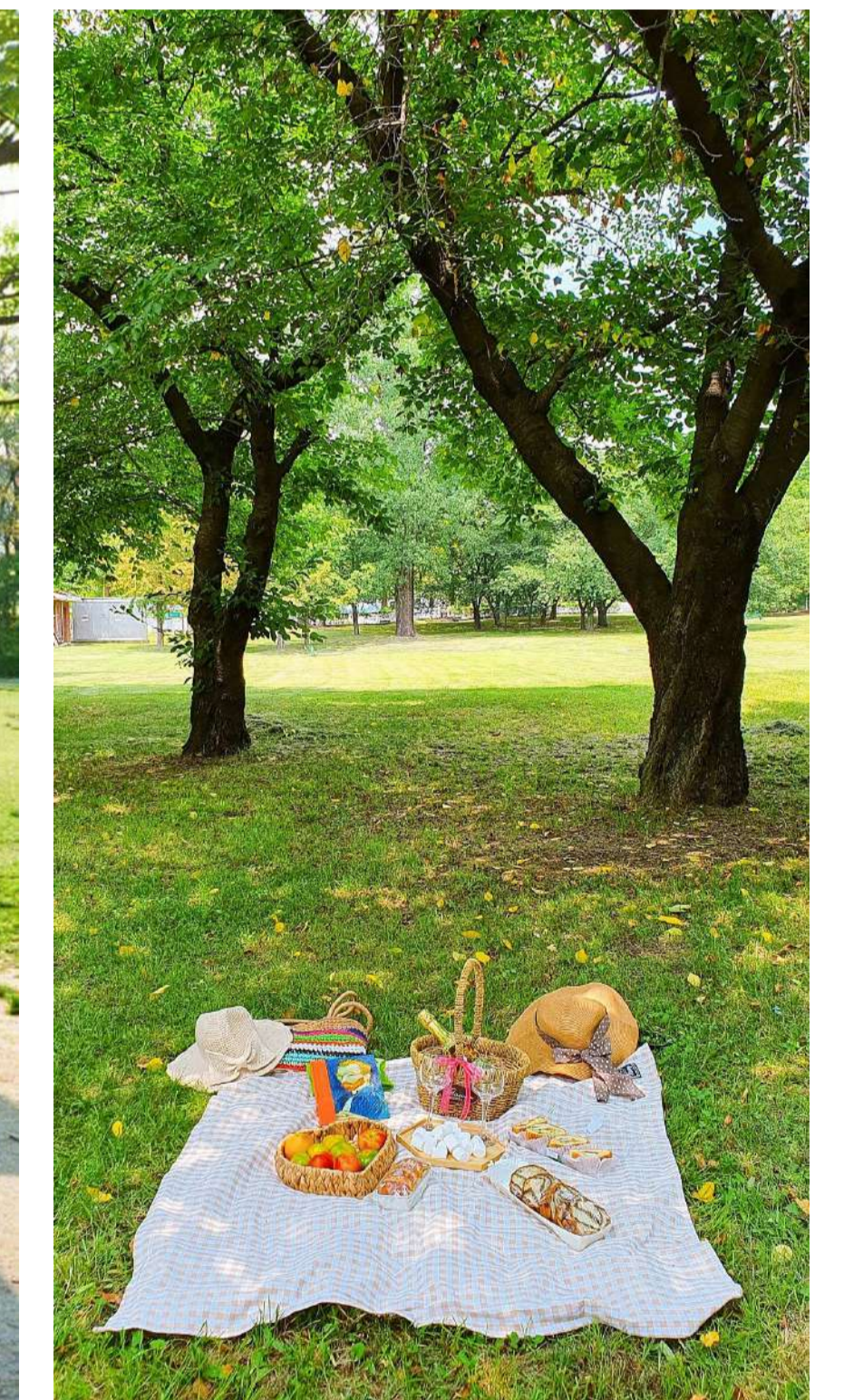


Figure 19 - Passive recreation

2. LOCAL PARK 6 , AUSTRAL - CONCEPT PLAN & SECTION A-A



Figure 20 - Concept Plan

LEGEND

- 1 EXISTING FOOTPATH
- 2 MAIN ENTRY - A clearly defined main entry is located at the south-west corner. The entry is marked by feature paving to establish a sense of arrival.
- 3 PARK SIGNAGE
- 4 RUBBISH BIN
- 5 PRIMARY PATH - Enhance park connectivity by providing a direct, accessible route across the site, linking key entry points with the main playground.
- 6 MAIN OPEN LAWN AREA - A larger sized turfed area designated for informal play, allowing users to run freely and kick a ball around.
- 7 SECONDARY OPEN LAWN AREA - A smaller sized turfed area for passive play, informal gatherings, and picnicking.
- 8 SHADED PLAYGROUND - Inclusive play area with rubber soffit and shade sail, designed for accessible and engaging play for children of various levels of ability.
- 9 FEATURE CANOPY TREE
- 10 NATURE PLAY AREA - A mulched surface designed for nature play, featuring a continuous obstacle course consisting timber logs, posts, and steppers.
- 11 PERIMETER MASS PLANTING - Enhanced safety around the open lawn area, acting as a soft and natural barrier.
- 12 SEWER LINE & 2M OFFSET EXCLUSION ZONE
- 13 SANDSTONE LOGS - Placed along the site boundary, dual function, barrier protection and seating opportunity.
- 14 SECONDARY ENTRIES - Additional access points to the park.
- 15 MAINTENANCE ENTRY - Timber bollards with chain and lock, roll-over kerb, verge replaced with concrete driveway, to enable entry for maintenance vehicles.
- 16 PICNIC SHELTER WITH TABLE & SEATS
- 17 PING PONG TABLE
- 18 RECOMMENDED LOCATION FOR ACCESSIBLE PARKING BAY
- 19 1:5 MASS PLANTING EMBANKMENT - Stabilises slope to maintain a flat, compliant playground surface.
- 20 RAINWATER GARDEN - Upgrades to future detail by council
- 21 BENCH

0 1 2 5 10m
SCALE 1:250@A1



SECTION A-A
SCALE 1:150@A1

Figure 21 - Section

3. LOCAL PARK 6 , AUSTRAL - RENDERS



Figure 22 Render - Nature Play Area



Figure 23 Render - Active Play Area

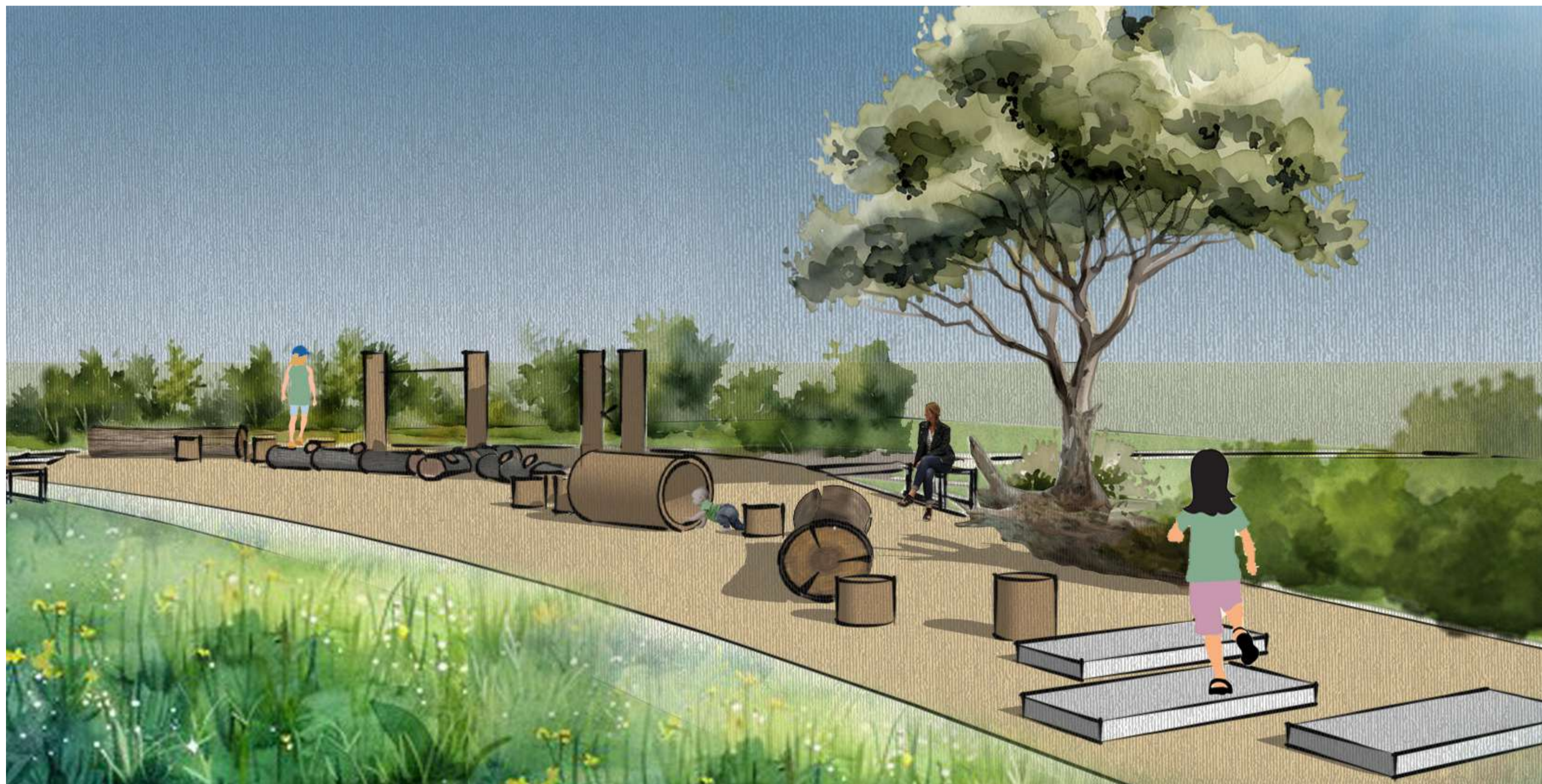


Figure 24 Render - Nature Play Area



Figure 25 Timber Stepping Logs

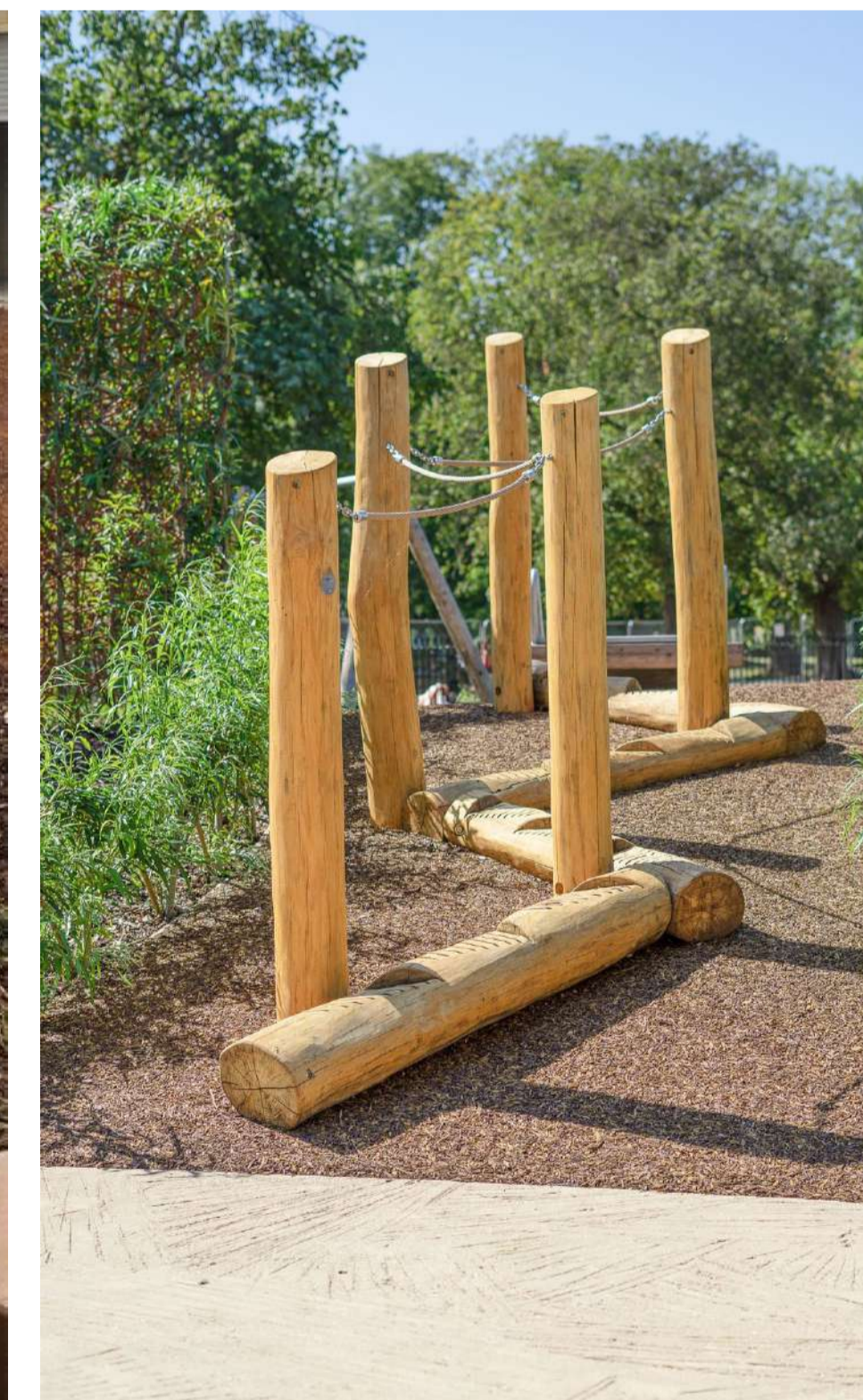


Figure 26 Upright Timber Logs



Figure 27 Carved Log



Figure 28 Basket Swing