

CONNECTED LIVERPOOL 2050

LOCAL STRATEGIC PLANNING STATEMENT
A LAND USE VISION TO 2050

**LIVERPOOL
CITY
COUNCIL**

CONTENTS.

MAYOR'S MESSAGE	4
CEO'S MESSAGE	5
OUR PEOPLE	6
ABOUT THE PLAN	7
IMPLEMENTATION TIMEFRAMES	8
WHAT WE'VE HEARD	9
VISION	18
LIVERPOOL CITY COUNCIL STRUCTURE PLAN	20
LIVERPOOL CITY CENTRE AND SURROUNDING AREA	22
LIVERPOOL TODAY	24
KEY CHALLENGES AND OPPORTUNITIES	27
PLANNING PRIORITIES	29
PLAN ON A PAGE	30

Connectivity – Our Connections **33**

PLANNING PRIORITY 1

Active and public transport reflecting Liverpool's strategic significance

PLANNING PRIORITY 2

A rapid smart transit link between Liverpool and Western Sydney International Airport

PLANNING PRIORITY 3

Accessible and connected suburbs

PLANNING PRIORITY 4

Liverpool is a leader in innovation and collaboration

Liveability – Our Home **43**

PLANNING PRIORITY 5

A vibrant, mixed-use and walkable 24-hour City Centre with the Georges River at its heart

PLANNING PRIORITY 6

High-quality, plentiful and accessible community facilities, open space and infrastructure aligned with growth

PLANNING PRIORITY 7

Housing choice for different needs, with density focused in the City Centre and centres well serviced by public transport

PLANNING PRIORITY 8

Community-focused low-scale suburbs where our unique local character and heritage are respected

PLANNING PRIORITY 9

Safe, healthy and inclusive places shaping the wellbeing of the Liverpool community



Productivity – Our Jobs

55

PLANNING PRIORITY 10

A world-class health, education, research and innovation precinct

PLANNING PRIORITY 11

An attractive environment for local jobs, business, tourism and investment

PLANNING PRIORITY 12

Industrial and employment lands meet Liverpool's future needs

PLANNING PRIORITY 13

A viable 24-hour Western Sydney International Airport growing to reach its potential

Sustainability – Our Environment

63

PLANNING PRIORITY 14

Bushland and waterways are celebrated, connected, protected and enhanced

PLANNING PRIORITY 15

A green, sustainable, resilient and water-sensitive city

PLANNING PRIORITY 16

Rural lands are protected and enhanced

IMPLEMENTATION, MONITORING AND REPORTING

69

FIGURES

FIGURE 1: Liverpool City Council Structure Plan	20
FIGURE 2: Liverpool City Council City Centre Inset	22
FIGURE 3: Liverpool LGA In Context	24
FIGURE 4: Transport Improvement Initiatives	34

ABBREVIATIONS

CAV	Connected and Autonomous Vehicles	LEP	Local Environmental Plan
CHP	Community Housing Provider	LGA	Local Government Area
CSP	Community Strategic Plan	LIP	Liverpool Innovation Precinct
DCP	Development Control Plan	LSPS	Local Strategic Planning Statement
DPIE	Department of Planning, Industry and Environment	NARClIM	NSW and ACT Regional Climate Modelling
EP&A	Environmental Planning and Assessment Act 1979	TfNSW	Transport for NSW
FAST	Fifteenth Avenue Smart Transit	WSA	Western Sydney Airport (Company)
IP&R	Integrated Planning and Reporting	WSI	Western Sydney International (Nancy-Bird Walton) Airport
LALC	Local Aboriginal Land Council	WSPP	Western Sydney Planning Partnership

MAYOR'S MESSAGE



The next 30 years promise to be an exciting time for Liverpool.

The new Western Sydney International (Nancy-Bird Walton) Airport will open, providing abundant local employment, education and business opportunities for our community. Council's flagship Fifteenth Avenue Smart Transit (FAST) Corridor project will make sure these opportunities are easily accessible for our residents.

Liverpool CBD will transform into a vibrant destination with a strong 24-hour economy – consolidating our position as Sydney's third CBD. The city will be more walkable, cooler and greener, with the amenity of Georges River at its heart.

The Liverpool Innovation Precinct, located around Liverpool Hospital, will grow, providing high-value health, education, research and advanced manufacturing jobs for the local community.

The population will also grow, but as it does we will make sure that growth happens in the right places, and that there are the modern, high-quality facilities, services and amenities that our residents and visitors need and deserve.

While many aspects of Liverpool are changing and opportunities abound, I am also mindful of the things about Liverpool we love and want to remain – the local character of our suburbs, our significant heritage, our fantastic bushland, our civic pride and our commitment to diversity.

The 16 priorities of this document capture our goals for Liverpool over the next 30 years, and provide a clear plan of how we're going to get there.

I encourage all those who live, work and do business in Liverpool to have your say on this document and let us know what your priorities are so this document can be the best reflection of our shared vision for the future. Let's create a future Liverpool we can all celebrate.

MAYOR WENDY WALLER



CEO'S MESSAGE



Liverpool is experiencing rapid change and growth, and it's imperative we have a clear vision of what we want our future to be over this next phase in our city's history, and a plan to get there.

The nation's largest infrastructure project – Western Sydney International (Nancy-Bird Walton) Airport – will be located entirely within our Local Government Area (LGA). Add in the ongoing transformation of our City Centre into Sydney's third CBD and the creation of the Western Sydney Aerotropolis, and you have a Liverpool with increased national and international significance.

We will be attracting more businesses, more people and more jobs. We need to make sure that the opportunities these changes offer are maximised to the benefit of everyone in the community. To do this we must plan ahead, implement city-shaping projects and work to safeguard the elements that make Liverpool a great place to live, work and play. The Local Strategic Planning Statement (LSPS) details our priorities over the next 30 years of development, and provides a list of actions that make sure we can meet our goals.

These actions include the completion of some of Council's most ambitious strategic projects ever attempted – realigning our CBD around the amenity of the Georges River including a river-edge promenade and new river crossings; developing Woodward Park into our own 'Central Park' – an iconic lifestyle precinct that will be a thriving hub of community activity known as Woodward Place; creating a rapid transit link between Liverpool City Centre and the new Western Sydney International Airport; and transforming our ageing stock of community facilities into a world-class network of modern, attractive facilities that address community needs.

The LSPS is our strategic roadmap for the future. It works off and expands upon the priorities of our Community Strategic Plan, *Our Home, Liverpool 2027*, and provides a one-stop resource for the major planning work we're doing to make Liverpool a vibrant, diverse and attractive place. I encourage you to review this draft LSPS and provide feedback so we can be certain that the vision we settle on resonates with as much of Liverpool's community as possible.

A handwritten signature in black ink, appearing to read 'Kiersten Fishburn'.

CEO, KIERSTEN FISHBURN



OUR PEOPLE

Liverpool City Council acknowledges the original inhabitants of the Liverpool Local Government area being the Darug and Dharawal Aboriginal People. We acknowledge that Aboriginal culture continues to strengthen and enrich our community.

We commit ourselves to preserve past, present and future identified Aboriginal sites and cultural landscapes, and to recognise and accept the significance of the Georges River as a 'Meeting Place' for the Darug, and Dharawal Aboriginal people.

Liverpool City Council supports and encourages Aboriginal and non Aboriginal people working together towards reconciliation.

Liverpool is one of the first official settlements in Australia, built by convicts and free settlers, and has become home to people from more than 150 nations.

We recognise the diversity of many cultures who share the values of tolerance and respect for one another. This diversity of our community is a great strength and we commit to working together to advance the interests of all residents.



ABOUT THE PLAN

The Local Strategic Planning Statement (LSPS) has been created to set Liverpool City Council's strategic planning vision for the next 20 years, and an additional 10 years.

It lists our planning priorities across four areas: **Connectivity, Productivity, Liveability, and Sustainability**. The LSPS will inform what type of growth occurs in our local government area (LGA), where it occurs and when it occurs. It sets out actions to deliver on our planning priorities in order to meet the community's future vision for Liverpool.

The LSPS has been prepared in accordance with the *Environmental Planning and Assessment Act 1979* (the EP&A Act). It identifies:

- The **basis for strategic planning** in Liverpool, having regard to economic, social and environmental matters;
- The **planning priorities** for Liverpool that are consistent with the Western City District Plan and the Community Strategic Plan;
- The **actions** required for achieving the planning priorities; and
- How Council will monitor and report on the **implementation of those actions**.

The LSPS gives effect to the *Greater Sydney Region Plan* and *Western City District Plan*.



It has also been informed by Council's Community Strategic Plan (CSP) – *Our Home, Liverpool 2027* – and aligns with the CSP's directions.

DIRECTION 1
Creating Connection

DIRECTION 2
Strengthening and Protecting our Environment

DIRECTION 3
Generating Opportunity

DIRECTION 4
Leading through Collaboration

IMPLEMENTATION TIMEFRAMES

SHORT TERM

Now-2020/2021

MEDIUM TERM

2021/2022-2028/2029

LONG TERM

2029/2030+

WHAT WE'VE HEARD

The draft LSPS has been informed by community consultation including:

- An online survey on Council's 'Liverpool Listens' webpage (approximately 500 responses);
- Feedback provided at District Forums;
- Feedback provided at the Moorebank Community Forum; and
- A Youth Workshop held in May 2019.

In preparing the draft LSPS, Council has also built upon the extensive consultation undertaken when developing our Community Strategic Plan – *Our Home, Liverpool 2027*. It has also been developed in consultation with Councillors, staff, State agencies and neighbouring councils.

The exhibition of this draft LSPS provides an opportunity for the community and stakeholders to have their say on Liverpool's future.

To find out more and to make a submission, visit listens.liverpool.nsw.gov.au.

Submissions can also be forwarded to lcc@liverpool.nsw.gov.au or sent to *The Chief Executive Officer, Liverpool City Council, Locked Bag 7064, Liverpool BC, NSW, 1871 (quoting ref. 2019/0962)*.

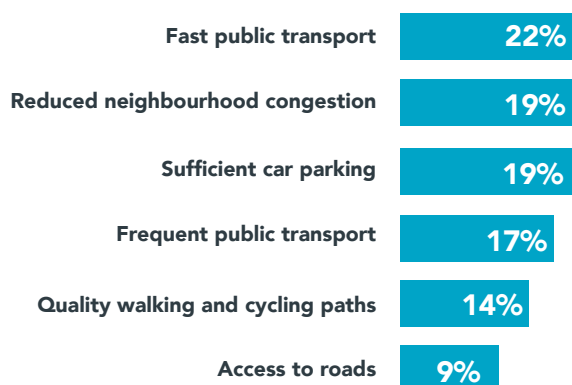
Submissions must be received by close of business, 9 August 2019.

WHAT WE'VE HEARD

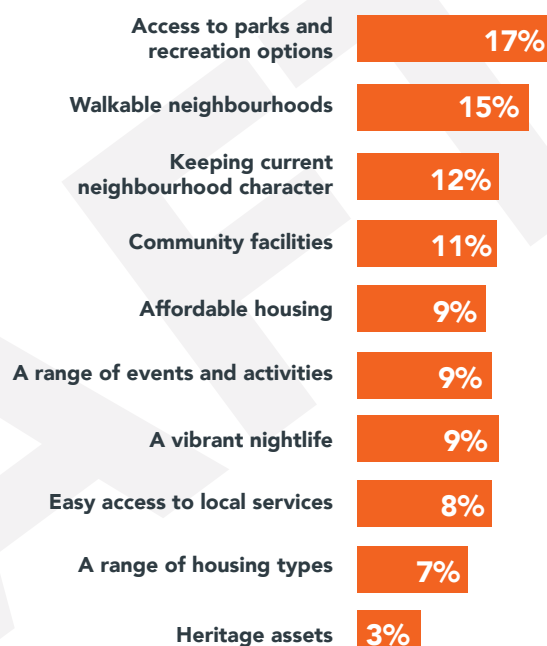
Liverpool Listens survey

You told us your top priorities were:

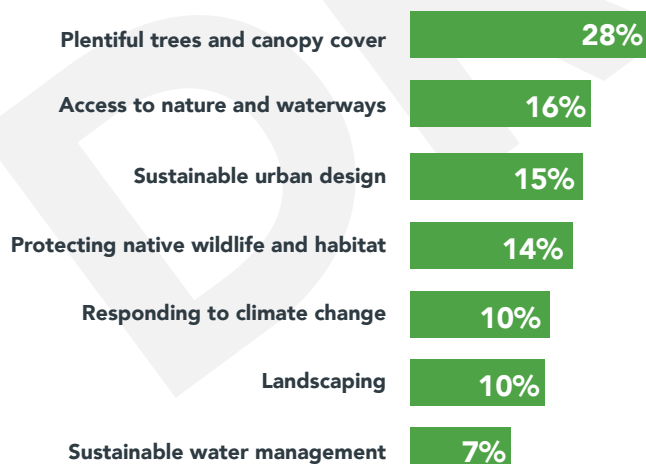
Transport Priorities



Liveability Priorities



Sustainability Priorities



Productivity Priorities



The top words used to describe your desired future Liverpool were:

Clean, Green, Safe, Sustainable, Vibrant

You said the top five things that needed to be improved in Liverpool were:

- More parks, trees and green space
- Better streets
- Better public transport
- A cleaner environment
- More car parking

Council's draft LSPS reflects the priorities of the community, and we will consult widely to further refine the community's vision for the future.



Planner for a day

Preschool students from Holsworthy Early Education and Care Centre responded to Council's survey with drawings and a letter to Council asking for:

- Somewhere to go on hot days;
- Improved access to clean beaches;
- Walkable neighbourhoods / walking paths;
- More parks / open spaces – with BBQ / Camping facilities;
- Improved public transport and roads;
- Pet friendly neighbourhoods;
- Improved emergency services; and
- More houses / housing diversity.

A visit to Council to meet with the Mayor and Council planners was held in May 2019.

The kids used Lego to show what they wanted Liverpool to look like in the future.

There were colourful houses, towers, farms and a jail boat to patrol the Georges River and arrest the bad guys.





'Shaping Your Future' Student Engagement Workshop

In May 2019, Council held an engagement workshop with 41 primary school students from 7 schools across the Liverpool LGA.

Key themes identified from the workshop included:

- Quality green spaces;
- Environmentally friendly buildings;
- Technology enhanced transport;
- Improved accessibility and inclusivity;
- Jobs and education close to home; and
- Improved air quality.

During the workshop, a graphic artist helped the students draw their vision for the future of Liverpool.





What makes my suburb a great place to live?

The culture –
everyone is
welcome

**Close
proximity
to shops
and schools**



The rich history of Liverpool, recent education opportunities, an Airport in the future, and a very diverse population.



**Great community, sports
facilities nearby**

**Location, hospital, shopping
malls, university, restaurants,
access to main roads**



**The diversity of the
people, the upcoming
vibrant culture**



**The Georges River and
Chipping Norton Lakes**

Location, not too far from
the Sydney CBD and
close to the outer west



**Proximity to major
transport routes**

What would make your suburb better?



A **clean** and **safer** community

More jobs, less traffic and cheaper housing

Express train to the city



Greater employment opportunities

Increase commuter parking spaces at Edmondson Park Station



VISION

CONNECTED LIVERPOOL 2050

A vibrant place for people that is community focused, walkable, public transport-oriented, sustainable, resilient and connected to its landscape. A place that celebrates local diversity and history, and is connected to other Sydney centres. A jobs-rich city that harnesses health, research, education, innovation and growth opportunities to establish an inclusive and fair place for all.

Liverpool in 2050 is a connected, cosmopolitan city. Anchored by a vibrant CBD in the east and a successful 24-hour Western Sydney International Airport to the west, the area is rich in opportunity.

Changes to planning controls in Liverpool City Centre have spurred significant high-quality development, with a balanced mix of housing, employment, community and retail space. Improvements to the urban domain and a focus on active and innovative transport have led to a thriving, safe, inclusive and green city centre with a strong 24-hour economy by 2050. Access to the Georges River has been improved, providing residents and visitors with cool, clean, green spaces in which to connect, play, swim and relax. While much has changed in the last 30 years, Liverpool still values and protects its rich heritage, be it Aboriginal, Colonial or migrant, and is renowned for its celebration of diversity and its residents' civic pride.

Liverpool has solidified its position as an innovation leader and Sydney's third CBD. The Liverpool Innovation Precinct provides high-value health, education and research jobs for local residents and skilled workers from across Sydney. Transport infrastructure has evolved to reflect Liverpool's strategic importance, with fast, frequent connections to other key destinations in Sydney and between our suburbs, enabling people to live, work and play within a 30-minute city. Liverpool is the destination of choice for business, and opportunities abound for local residents.

Council's flagship project, the Fifteenth Avenue Smart Transit (FAST) Corridor, uses electric, autonomous technology to seamlessly connect residents to the vast commercial and industrial employment opportunities provided by Western Sydney International Airport, while spurring sustainable transit- and landscape-oriented

development along its route. The airport and the FAST corridor showcases the unique natural identity of South West Sydney to the world. As the gateway city to the airport, Liverpool enjoys a robust commercial and visitor economy, providing office space, hotel and key worker accommodation, and lively recreation options day and night.

Liverpool's suburbs are distinct environments with a focus on local character and quality built form. Housing growth has been planned with supporting infrastructure to maximise amenity. Density has been concentrated in the CBD and centres close to public transport, while ensuring established local character is respected. In growth areas, housing development has been supported by crucial transport and servicing infrastructure. Land has only been rezoned for housing when required, and Liverpool's important contribution as a food bowl for Sydney and the export market has been protected and enhanced.

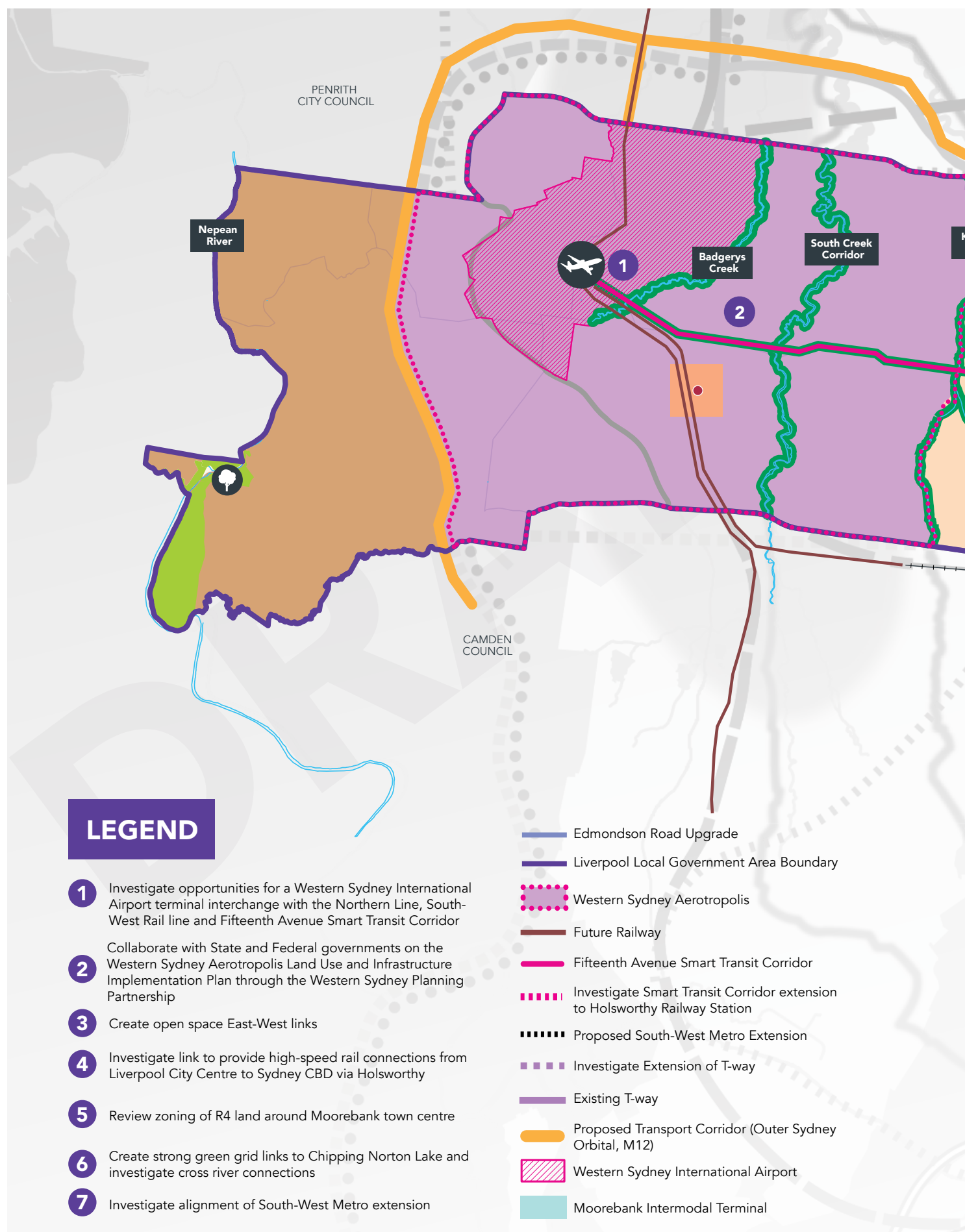
Areas of high ecological value have been protected and enhanced while high tree canopy cover exists across both established and new release areas, and active transport links have been strengthened, creating a high-quality, cooler, high-amenity environment. New housing is supported by plentiful open space, high-quality community facilities, reliable transport infrastructure and water-sensitive urban design. Liverpool has taken a strong role in meeting the State Government's net zero 2050 aspirations, and is an exemplar of sustainability and climate resilience.

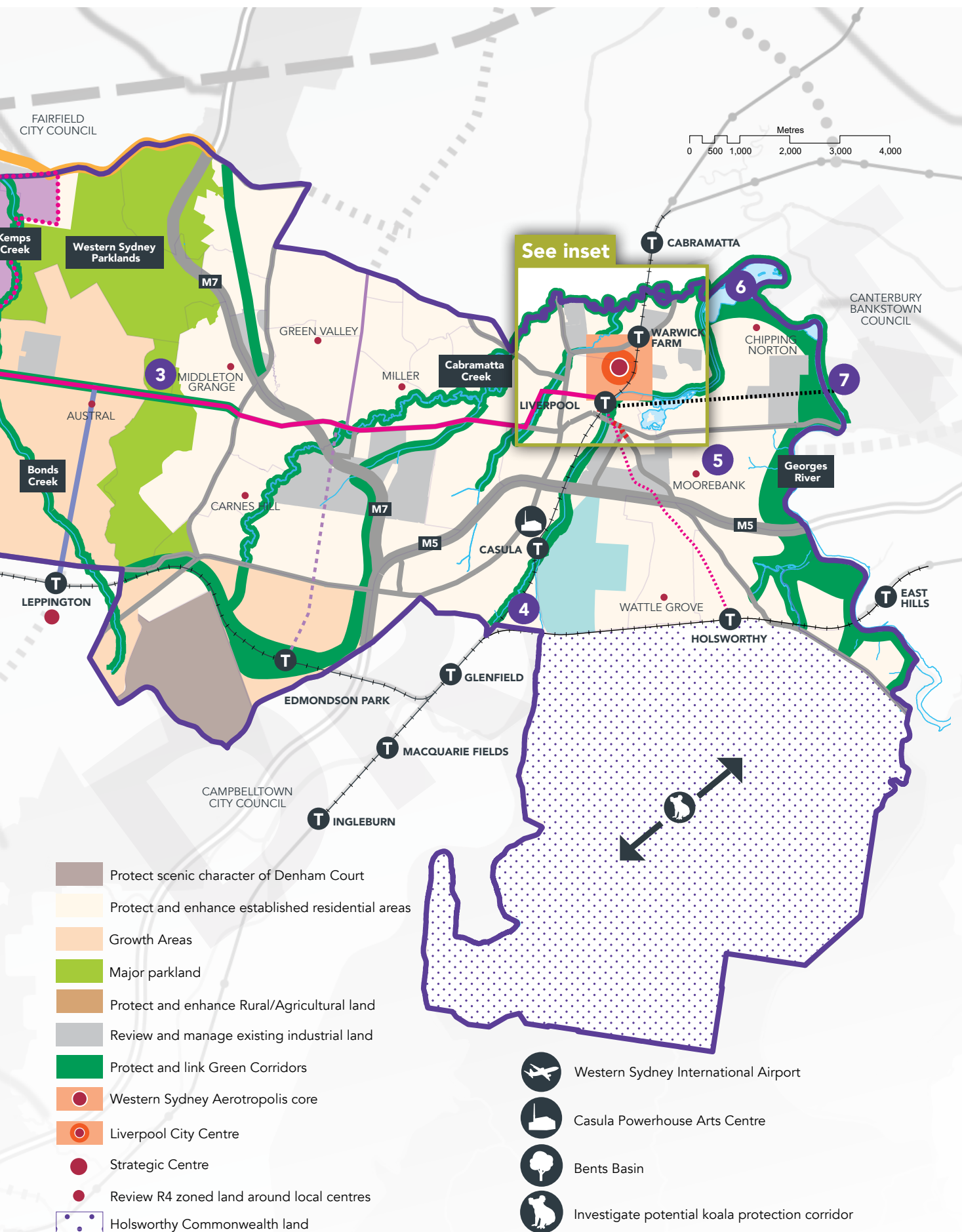
While the airport has led to major changes to the western part of the LGA, Council has protected its rural lands and ensured that biodiversity, nature and sustainability are central considerations of all new development.



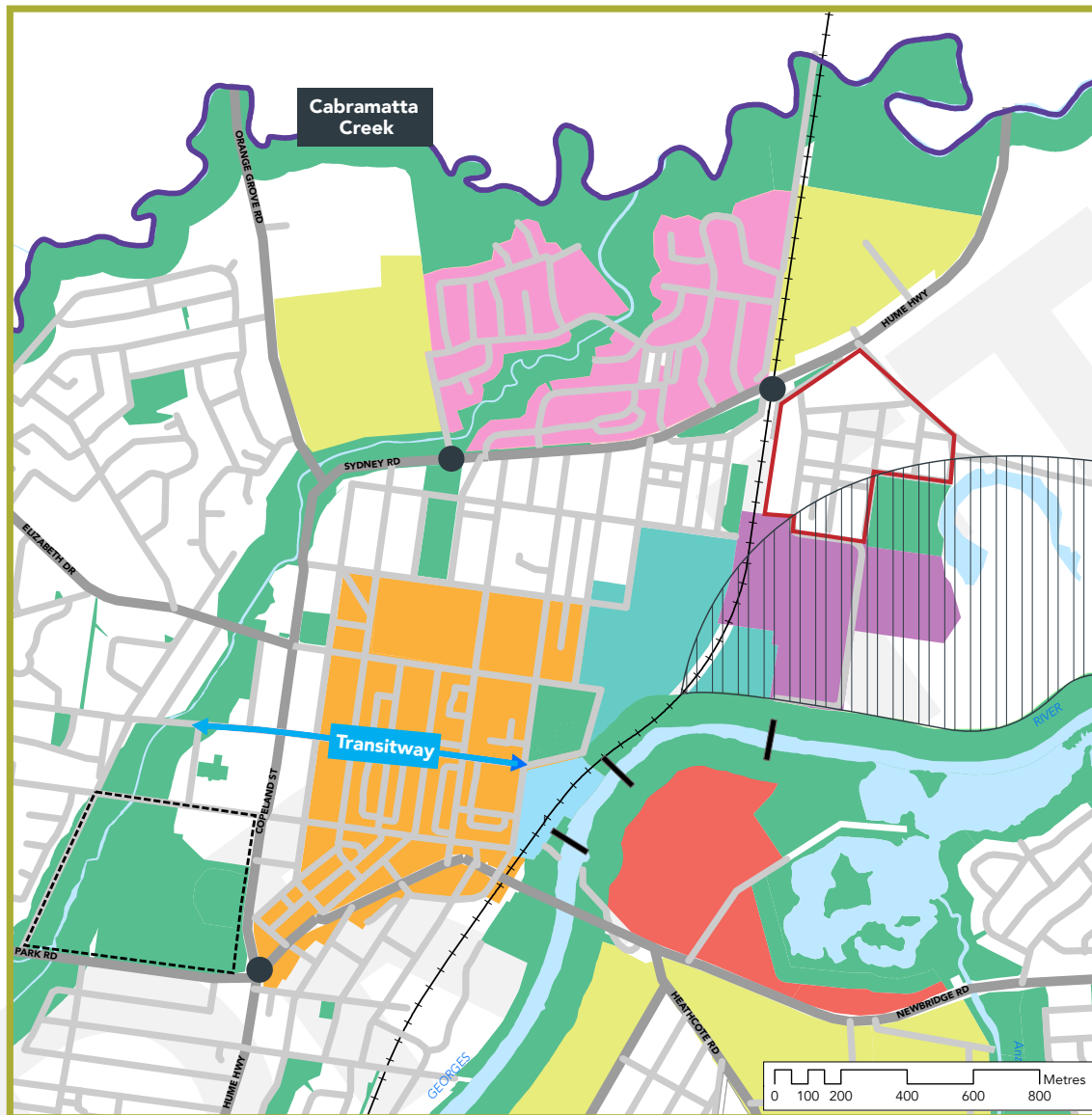
Artist's impression of Liverpool Civic Place

LIVERPOOL CITY COUNCIL STRUCTURE PLAN




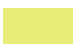

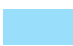











LIVERPOOL CITY CENTRE AND SURROUNDING AREA (Inset)



LEGEND

-  Investigate grade separated pedestrian crossing
-  Investigate linking open space & green corridor
-  Review and manage existing industrial area to support CBD/Innovation Precinct
-  Retain Industrial Zonings
-  Investigate cross river links
-  Investigate railway station redevelopment
-  Masterplan Woodward Place (including RE2 zone)
-  Work with State Government to investigate residential redevelopment precinct
-  Investigate Residential/Mixed Use to support CBD and Innovation Precinct
-  Health & Education Precinct
-  Commercial Core/Mixed Use
-  Investigate a mix of uses
-  Avoid residential development in odour buffer to Water Recycling Plant



Artist's impression of a mixed use building

LIVERPOOL TODAY

OUR HOME

A growing city with a diverse community and rich heritage.

Liverpool is a growing city with a bright future. Spanning the Georges River in the east to the Nepean River in the west, it is a diverse local government area (LGA) featuring city, suburban and rural living.

Liverpool is the modern face of multicultural Australia. We are proudly one of the most culturally diverse cities in NSW with around 40% of people born overseas and half the population speaking a language other than English at home. We have high levels of refugee and migrant settlement, so our diversity is growing. We also have a significant Aboriginal community, and celebrate the original inhabitants – the Darug and Dharawal people.

Liverpool is experiencing substantial growth, with the population expected to increase by around 60% between 2019 and 2036. This growth is due to increased residential development in our city centre and near train stations, and through new release development in our growth areas.

The city is working to solidify its position as a strategic centre. The Liverpool City Centre is being revitalised to support increased commercial and residential uses and will develop into a walkable, active river city with attractive open spaces and increased transport connections. A burgeoning health and education-focused innovation precinct could see additional health and knowledge workers attracted to the area, beyond the 30,000 additional health and knowledge workers already expected by 2036.

We are also proudly home to the Western Sydney International (Nancy-Bird Walton) Airport, set to open in 2026. The airport and associated Aerotropolis are expected to generate significant employment and economic opportunities for Liverpool, including knowledge-intensive jobs. The Liverpool City Centre is equidistant from Western Sydney International Airport and Sydney Airport, making it a natural location for development supporting the new airport.

Liverpool has substantial environmental assets, with a wide variety of plants, animals and ecosystems, including a significant number of threatened species. As Liverpool grows and the effects of climate change become more pronounced, protecting our trees, waterways and open space is critical to our success as an attractive, welcoming city.

Liverpool has a rich heritage with a major cultural and arts focus. A number of significant heritage buildings and places are protected at the local and state levels, including Rosebank Cottage, Pioneers' Memorial Park, the Casula Powerhouse Arts Centre, the TAFE college building, which is formerly Liverpool Hospital (1820-1958), and St Luke's Church (1819-present). There are also significant Aboriginal sites and cultural landscapes, which we are committed to preserving.

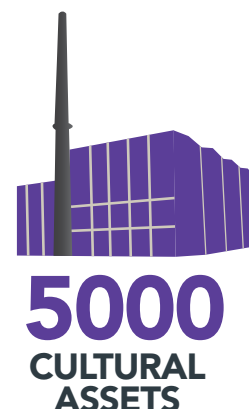
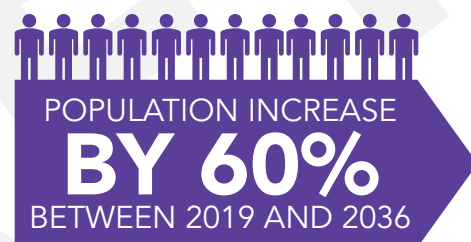


DID YOU KNOW?

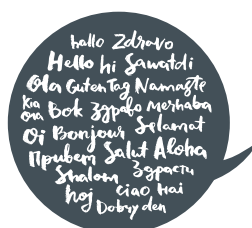
CLIMATE CHANGE PROJECTIONS INDICATE THAT THE LIVERPOOL CITY AREA WILL BECOME



THE ORIGINAL INHABITANTS OF LIVERPOOL ARE THE **DARUG AND DHARAWAL** ABORIGINAL PEOPLE

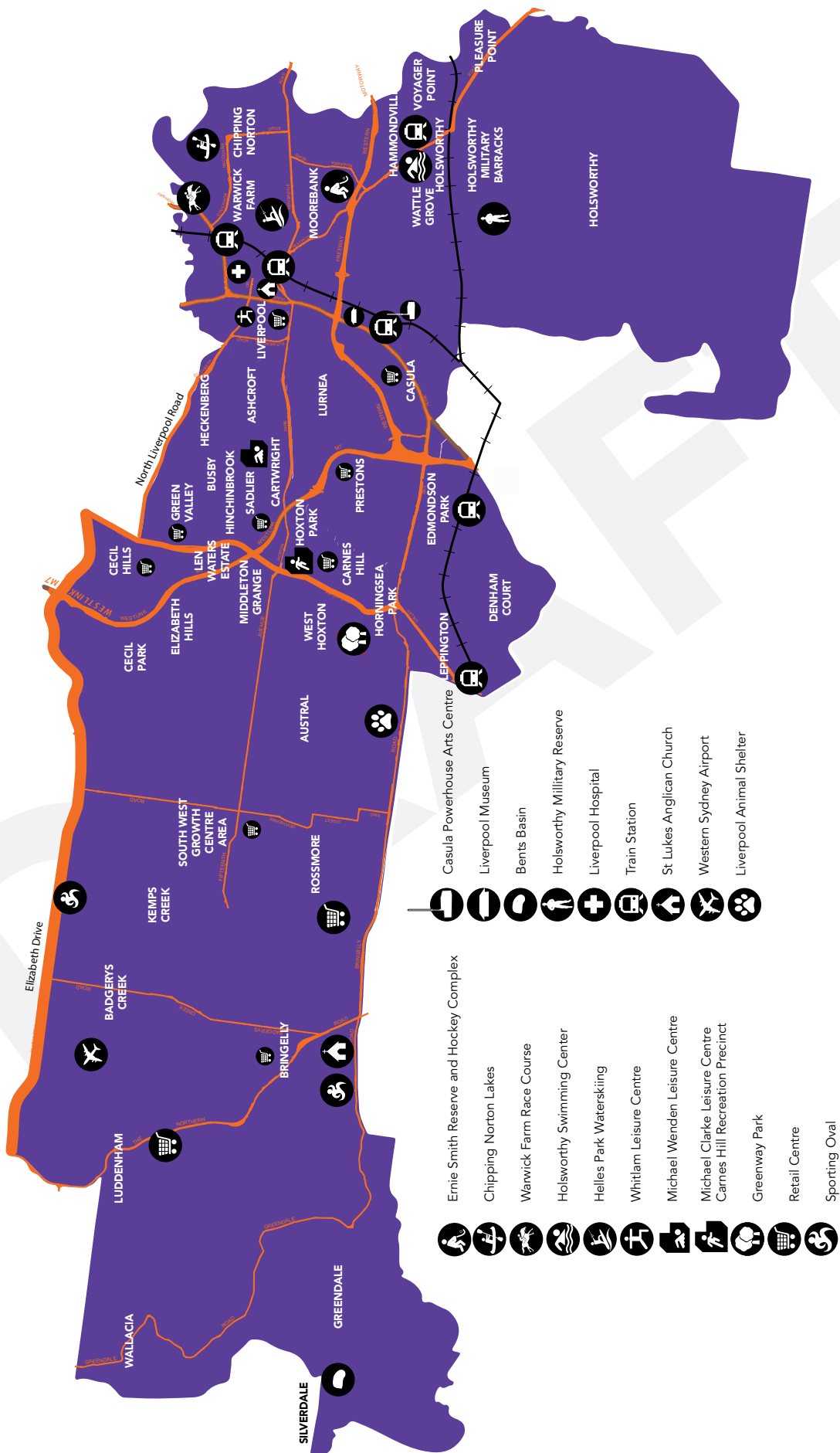


40%
BORN OVERSEAS



52% **SPEAK A LANGUAGE OTHER THAN ENGLISH AT HOME**

OUR HOME
OUR CULTURE



KEY CHALLENGES AND OPPORTUNITIES

Transport Accessibility

Liverpool has good access to Sydney's major motorways, including the M5 and M7, providing direct routes to the wider Western City District and beyond. However, congestion during peak periods is a major challenge. Many residents use cars as opposed to public transport, and the growing population is placing demands on existing infrastructure.

Roads are being enhanced through key projects including The Northern Road Upgrade, the Bringelly Road Upgrade, the M12 motorway and the Outer Sydney Orbital. Council also is working with external stakeholders to improve access in and around the CBD and investigate options for public parking to support growth.

Council advocates a modal shift to public transport, however new or additional, better and faster services are required to make public transport a more attractive option. Council will continue to push for new and improved public transport services that match Liverpool's status as Sydney's third CBD. We will also work to improve active transport options, such as cycling, that can reduce congestion while improving health.

Council's flagship project – the Fifteenth Avenue Smart Transit Corridor – will provide our residents with a rapid public transit connection from Liverpool city centre to the many opportunities provided by the Western Sydney airport, including new high-value jobs. It will also link existing suburbs such as Miller and Middleton Grange, redressing past public transport disadvantage.

City Economy

While Liverpool's rapid population growth creates momentum for new business opportunities, significant challenges exist in ensuring that local employment growth keeps pace with population growth. Currently close to 70% of Liverpool's population works outside the LGA, reflecting a long-standing structural imbalance of jobs between Western and Eastern Sydney. A key Council priority is providing local jobs for local people. As part of the Western Sydney City Deal, we are committed to supporting an increase in jobs in the Western

City District by 200,000 over the next 20 years. Focus will be placed on supporting Liverpool's competitive advantages – health, education, distribution and logistics, professional services and advanced manufacturing. While we will be investing in opportunities to grow and transition industries, we will also support and nurture the significant number of skilled trade jobs operating in the LGA.

Liverpool continues to experience growth in commercial and industrial development. Its status as the key regional centre of South West Sydney, and its strong transport links to other areas of Sydney, place it in prime position to attract a range of industries. This is heightened by the new Western Sydney International Airport and Aerotropolis, which promises growth in industries such as agriculture, agribusiness, aerospace and tourism, as well as the Moorebank Intermodal Terminal.

The revitalisation of the city centre is a key Council priority to support economic growth. Council has implemented several strategies aimed at revitalising the city centre, developing key economic, cultural, recreation and entertainment activities, and creating a place in which people want to live and business wants to invest.

The Natural Environment & Sustainability

Liverpool's growth, while increasing opportunities for the community, also places pressure on our environment – a challenge Council is working to address.

Maintaining and enhancing natural values in the Liverpool LGA has the potential to increase the area's attractiveness as a place to live, work and play. Council is actively pursuing opportunities to increase connections to the Georges River and Chipping Norton Lakes, which involves improving community access to riverfront land and increasing opportunities for recreation while also protecting and enhancing environmental values such as water quality.

The Western District is noted for having significantly lower tree canopy cover, which along with geography and continued increases in impermeable surfaces associated with urban development, contributes to an urban heat island effect that makes

KEY CHALLENGES AND OPPORTUNITIES

temperatures significantly higher than in eastern Sydney areas. Climate change projections from the NSW and ACT Regional Climate Modelling (NARCLIM) Project indicate that the Liverpool City area will become warmer, with more hot days and fewer cold nights. Extreme temperatures will become more severe and droughts will be more frequent and last longer. There will be slightly more rainfall overall, and storm rainfall intensity will increase, adding to flood risk. The risk of bushfire will grow. Extreme weather events are projected to become more severe. This can place human life, property and natural ecosystems at increased risk.

Council will work to both mitigate and adapt to climate change, in partnership with the State and Federal governments. Because Council has limited ability to influence sustainability outcomes for the vast majority of development, we will advocate strongly for improvements to building codes and other associated State planning instruments in order to help us to address issues of urban heat and climate change. We will also pursue opportunities to address energy, waste and water efficiency, such as the creation of solar farms, better design of precinct-wide systems; increase tree canopy; and implement water-sensitive urban design.

Approximately one-third of Liverpool's land is covered by native vegetation and the LGA contains a number of significant biodiversity values, including vegetation communities, threatened ecological communities, and threatened and migratory species and populations. This includes the critically endangered Cumberland Plain Woodlands, which are at threat from increasing suburban development. We will protect, enhance and connect areas of high conservation value bushland and corridors to offer the best chance of long-term survival of flora and fauna. It should be noted, however, that the State Government's biocertification process has a dominant influence over ecological outcomes, particularly given that the extent of biocertified land is likely to be expanded within Western Sydney. Council continues to advocate for the protection of its important high conservation value land.

Significant amounts of Liverpool's rural lands are earmarked for urban development, making it important that we protect remaining rural and scenic lands from urban development into the future, and that there are clear boundaries between urban, non-urban and scenic lands.

Social connection

Liverpool is one of the most culturally diverse cities in NSW with around 40% of people born overseas and almost half the population speaking a language other than English at home.

Liverpool is also a young LGA, with a median age of 33 and 37% of the population under the age of 25. While there is currently a lower number of people in older age groups (60+ years), demographic trends point to a rapid increase in older people over the next 30 years.

Liverpool also has a slightly higher level of disadvantage than the rest of Greater Sydney, and has a high number of households in rental and mortgage stress. This disadvantage is not evenly distributed across the LGA, with some areas featuring much higher levels of hardship, particularly in areas with high proportions of social housing, such as the 2168 District.

Liverpool needs to continue efforts to create a harmonious society where differences are appreciated and celebrated, while working to address inequality. There is also a challenge for the Council to ensure its services reach a broad range of citizens in an equitable way while still accommodating those most in need, such as people with a disability.

Local character

Liverpool is growing rapidly, putting pressure on both growth areas, which are seeing major increases in greenfield development, and established areas, where we are seeing more infill development. Council is working hard to accommodate this significant growth and the opportunities it brings while ensuring that local character and heritage are preserved and Liverpool's renowned community pride remains intact.

Key issues for Council include ensuring development is of an appropriate scale, that congestion is properly managed and that service delivery is improved – both for new suburbs where services are being rolled out and in our established areas where services need to be upgraded to ensure great liveability outcomes.

PLANNING PRIORITIES.



PLAN ON A PAGE

OUR THEMES AND PLANNING PRIORITIES



CONNECTIVITY

Our Connections

PLANNING PRIORITY 1

Active and public transport reflecting Liverpool's strategic significance

PLANNING PRIORITY 2

A rapid smart transit link between Liverpool and Western Sydney International Airport

PLANNING PRIORITY 3

Accessible and connected suburbs

PLANNING PRIORITY 4

Liverpool is a leader in innovation and collaboration



LIVEABILITY

Our Home

PLANNING PRIORITY 5

A vibrant, mixed-use and walkable 24-hour City Centre with the Georges River at its heart

PLANNING PRIORITY 6

High-quality, plentiful and accessible community facilities, open space and infrastructure aligned with growth

PLANNING PRIORITY 7

Housing choice for different needs, with density focused in the City Centre and centres well serviced by public transport

PLANNING PRIORITY 8

Community-focused low-scale suburbs where our unique local character and heritage are respected

PLANNING PRIORITY 9

Safe, healthy and inclusive places shaping the wellbeing of the Liverpool community

Priorities are not listed in order of importance.
Each priority is of equal importance.



PRODUCTIVITY

Our Jobs

PLANNING PRIORITY 10

A world-class health, education, research and innovation precinct

PLANNING PRIORITY 11

An attractive environment for local jobs, business, tourism and investment

PLANNING PRIORITY 12

Industrial and employment lands meet Liverpool's future needs

PLANNING PRIORITY 13

A viable 24-hour Western Sydney International Airport growing to reach its potential



SUSTAINABILITY

Our Environment

PLANNING PRIORITY 14

Bushland and waterways are celebrated, connected, protected and enhanced

PLANNING PRIORITY 15

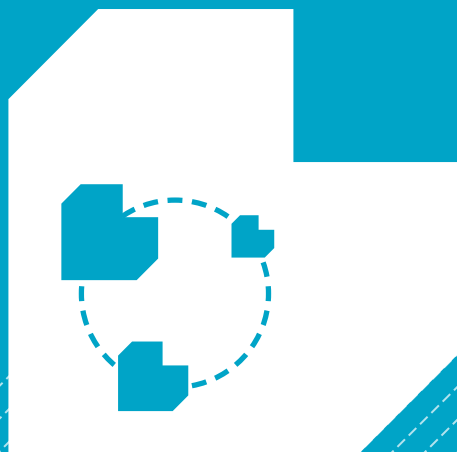
A green, sustainable, resilient and water-sensitive city

PLANNING PRIORITY 16

Rural lands are protected and enhanced



Artist's impression of the Fifteenth Avenue Smart Transit (FAST) project



CONNECTIVITY

Our Connections

The Liverpool of 2050 is a fast, efficient and productive city connected by rapid frequent transport, high speed digital networks and strong collaboration between community, business and government, all supporting abundant opportunity.

Liverpool will grow its position as the pre-eminent capital of South West Sydney, reflecting its history, amenity, strategic location, and large concentration of jobs and services.

Today Liverpool is growing rapidly and is predicted to welcome more than 130,000 additional residents between 2019 and 2036 – close to a 60% increase on the current population. Council is committed to supporting this growth while providing the best outcomes for the local community. This means ensuring the necessary infrastructure is in place to support growth and manage congestion.

Transport connectivity is a critical element of Council's vision for a connected Liverpool. In our draft LSPS survey, the community told us its top transport priority is 'faster public transport services to Liverpool and other major centres'. While Liverpool is known for its strong road transport links, including proximity to the M5 and M7 motorways, Council continues to advocate for better public transport connectivity. This will be particularly important for the success of Liverpool's burgeoning Innovation Precinct, Western Sydney International Airport and Western Sydney Aerotropolis, and to help in the management of road congestion.

The development of the airport, located entirely within the local government area (LGA), provides one

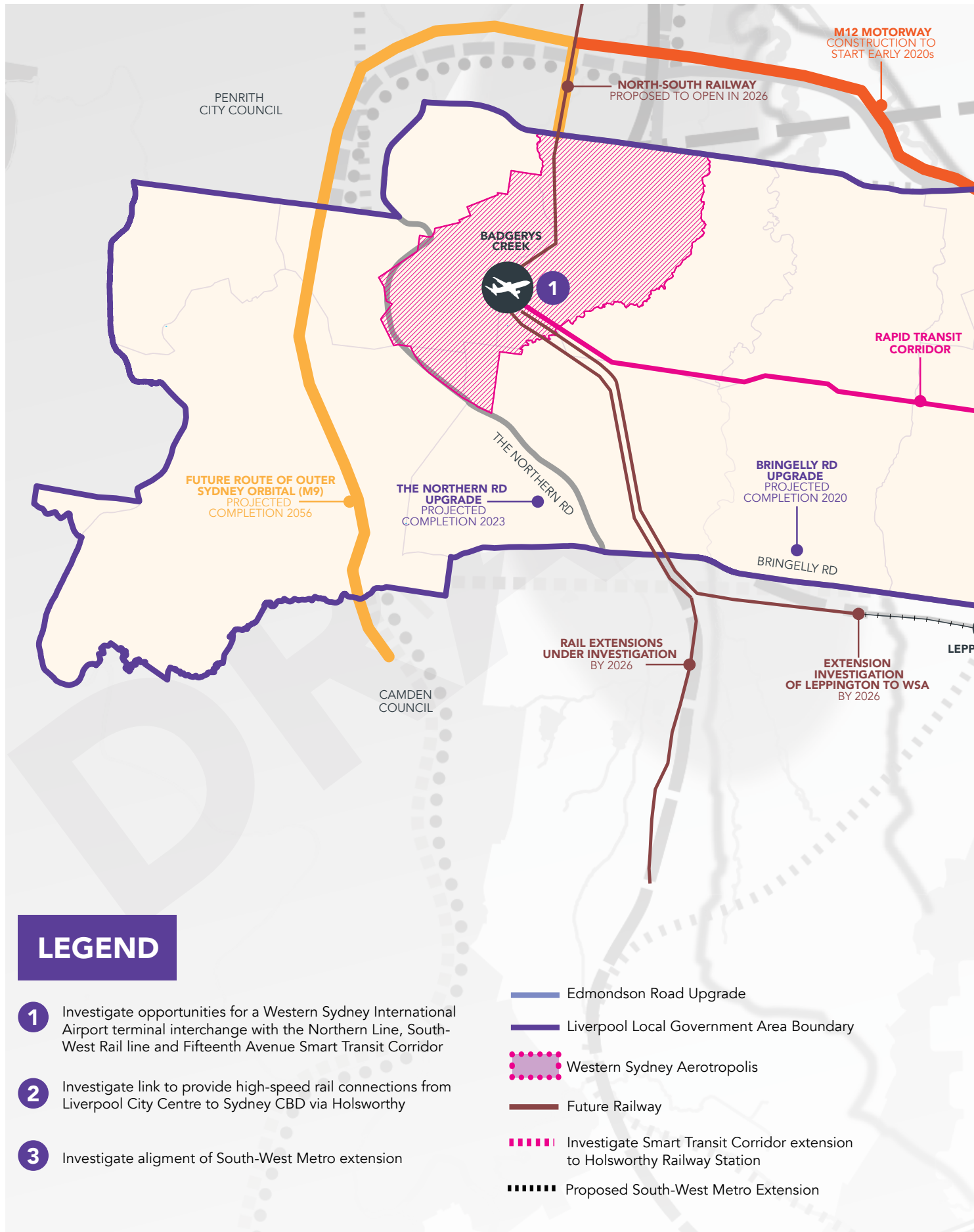
of our biggest opportunities. Liverpool has a unique opportunity to become the hub for the transport of goods, services and information between Sydney and the world, but we need the supporting infrastructure to deliver this vision.

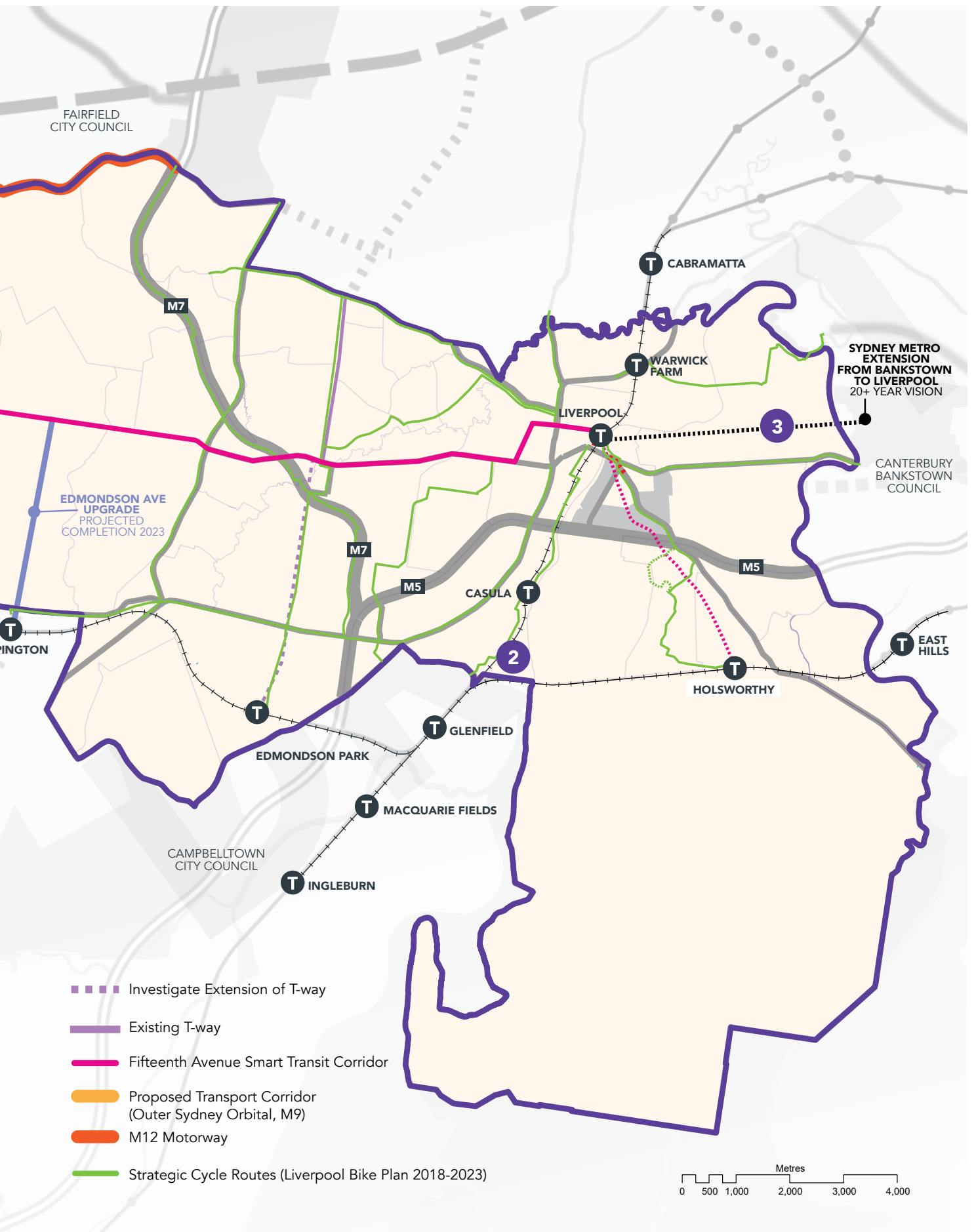
We will ensure that infrastructure projects being planned for and delivered – including the South-West rail line extension, the Moorebank Intermodal Terminal, the M12 motorway, the Outer Sydney Orbital and freight line, the Sydney Metro City and Southwest extension from Bankstown to Liverpool and the North-South rail line – benefit Liverpool's residents, and will advocate for their timely delivery. We will also progress city-shaping infrastructure such as the Fifteenth Avenue Smart Transit (FAST) Corridor project, and advocate for Liverpool to be connected to future fast rail projects

Connectivity also refers to digital connectivity. As part of the Western Sydney City Deal, Liverpool will be at the forefront of digital technology, developing a Digital Action Plan and fast 5G Strategy to ensure our residents and local industries have the tools to take advantage of new economy opportunities, and for Liverpool to meet its goal of becoming a connected, smart Innovation City.

Finally, connectivity means collaboration. We have a strong relationship with residents, community groups, local businesses, Councils, state agencies, and State and Federal governments. We will continue to put collaboration and consultation at the heart of our activities to get the best outcomes for everyone.

TRANSPORT IMPROVEMENT INITIATIVES





CONNECTIVITY

LOCAL PLANNING PRIORITY 1

Active and public transport reflecting Liverpool's strategic significance

RATIONALE

As a Metropolitan Cluster in the Greater Sydney Region Plan – *A Metropolis of Three Cities* and one of the fastest growing LGAs in Australia, Liverpool's transport systems must cater to existing and future development, and provide connectivity to other metropolitan centres and clusters.

While Liverpool is well connected to other major centres, it currently takes a long time to travel via public transport, thus 30-minute city outcomes are not available to many of the LGA's residents.

Our community survey indicated that 'fast public transport to Liverpool and other centres' was the most important transport desire for residents and workers in Liverpool. With the strengthening of its health, education and innovation sectors, fast public transport connectivity will be a key ingredient to success.

Our vision is to have fast and frequent connections within Liverpool LGA and to other centres, and Council is committed to advocating for the transport we need and deserve. Council will continue to make representations to the State Government on critical transport improvements in and around the Liverpool LGA, including:

- Express train services between Liverpool and Sydney CBD and beyond;
- The fast-tracked extension of the City & Southwest Metro from Bankstown to Liverpool;
- A fast-tracked Leppington to WSIA-Aerotropolis train link with an interchange at the airport;
- Western Sydney Aerotropolis/Airport as a stop on any future fast rail project;
- Improvements to the road network surrounding Liverpool City Centre to support additional developments in the Liverpool Collaboration Area;

- Road network upgrades to minimise traffic impacts from Moorebank Intermodal Terminals; and
- Heathcote Road upgrade between Infantry Parade and Pleasure Point

Future transport investigations include an extension to Council's proposed FAST corridor and an extension of the Parramatta-Liverpool Rapid Bus T-Way to Edmondson Park. An extension of the currently proposed FAST corridor from the city centre south to Holsworthy would allow direct interchange with the Airport & South Line (T8), providing a relatively rapid connection between Western Sydney International Airport, Liverpool City Centre, Sydney Airport and the Sydney CBD. This would provide better access to jobs and reduce road congestion. Liverpool's bus T-way priority corridor could also be extended to provide public transit connectivity from new population centres such as Edmondson Park to the FAST Corridor and airport, north to Parramatta and south into Ingleburn, which also has access to the T8 line.

Council is also working to address active transport, acknowledging the health and amenity benefits of walking and cycling, by implementing the Liverpool Bike Plan 2018-2023. By 2050 there will be a complete connected network of cycle paths in new and established areas.





Our vision is to have fast and frequent connections within Liverpool and to other centres.



COUNCIL WILL

- Advocate for improvements to public transport connections and timetabling providing Liverpool residents with fast access to other major centres and key infrastructure such as Western Sydney International Airport and the Sydney CBD.
- Work to ensure all Liverpool's residents and workers can access the benefits of the 30-minute city.
- Improve cycling and walking tracks, and prioritise pedestrian movement in the CBD and around Chipping Norton Lakes.
- Investigate locations of active transport bridge connections into adjoining LGAs.
- Continue advocating for more commuter car parking around train stations.

ACTIONS

- 1.1** Update CBD Parking Strategy. **(short term)**
- 1.2** Review and amend LEP to reflect outcomes of Transport and Traffic Study. **(short term)**
- 1.3** Advocate the prompt delivery of the South-West rail line extension from Leppington to Western Sydney International Airport. **(short term)**
- 1.4** Advocate a terminal interchange at Western Sydney International Airport **(short term)**
- 1.5** Advocate a fast rail service to the Liverpool City Centre from Sydney CBD, and enhanced integration with future rail links. **(short term)**
- 1.6** Advocate a Western Sydney Aerotropolis/Airport stop on future high speed rail network. **(short term)**
- 1.7** Work with TfNSW to bring forward extension of Sydney Metro City and Southwest and investigate a preferred alignment. **(short term planning, with delivery in the long term)**
- 1.8** Upgrade Edmondson Avenue from Fifteenth Avenue to Bringelly Road. **(medium term)**
- 1.9** Work with Transport for NSW (TfNSW) on an extension of the T-way from Hoxton Park Road south to Edmondson Park Station. **(medium term)**
- 1.10** Investigate extension of the FAST Corridor to Holsworthy Station. **(short term planning, with delivery in the long term)**

CONNECTIVITY

LOCAL PLANNING PRIORITY 2

A rapid smart transit link between Liverpool and Western Sydney International Airport

RATIONALE

To assist in achieving Liverpool's goal of becoming the regional city for South West Sydney, and support its role as a Metropolitan Cluster in the Greater Sydney Region Plan, fast and regular connections to other strategic centres and key facilities is of critical importance.

Council's flagship project, the Fifteenth Avenue Smart Transit (FAST) Corridor, is a visionary city-shaping project intended to deliver a high-speed end-to-end link between the Liverpool CBD and the Western Sydney International Airport by the airport's opening in 2026. Liverpool City Council considers that rapid transit along Fifteenth Avenue needs to be high-quality, fast (20-minute connection to the airport), supportive of compact transit- and landscape-oriented development, suitable for both workers and airline passengers (directly connecting to Western Sydney International Airport), and cost-effective. Council is designing the corridor to support a rapid transit mode that meets these criteria.

Council sees the FAST Corridor as a key gateway for visitors to Australia, and as such envisages a parkland corridor that provides multiple roles, including landscaping, city cooling and water sensitive urban design. The location of this corridor, as the gateway to Australia for international travellers, is an opportunity to showcase high-quality affordable design and the unique natural environment of South West Sydney. International travellers want to experience Australian nature, and Fifteenth Avenue – as a parkway – can be their first introduction to this (similar to the experience of arriving at Changi Airport and entering Singapore via the Eastern Parkway).

These segments will be designed to be uniquely South West Sydney. The corridor will be high-quality,

inviting and vegetated, with buildings and transport infrastructure naturally forming part of the landscape. This parkway will reinforce the city's commitment to effective public transport and active transport, such as cycling.

Council will also encourage compact medium/ high-density development in appropriate locations along the corridor, which, while not common yet in Western Sydney, will be designed in a way that is familiar and approachable. Design decisions will prioritise affordability and achievability while ensuring quality of place. Design will also integrate the circular economy – an economic system aimed at minimising waste and optimising resource use – as a fundamental design principle, along with a connection to existing natural assets (including the Western Sydney Parklands). Overall the corridor will create places for people with a high level of amenity for current and future populations and users.

Liverpool City Council's approach to development in the area is intended to reduce sprawl, improve availability and patronage of public transport, increase walking and healthy lifestyles, and preserve the amenity and productivity of the area and rural land uses. We will investigate first and last mile active and public transport connections between new centres and established suburbs that lie adjacent.

Council is considering a 40-metre corridor along the length of Fifteenth Avenue to enable design aspirations in a manner that is adaptable, flexible and able to accommodate future needs and potential modes. The 40m width provides the flexibility to adapt and expand to meet demand without the need to acquire at substantially higher valuations as land use is intensified with development of the Western Parkland City, Liverpool City and points between.



**The Fifteenth Avenue
Smart Transit (FAST)
Corridor is a visionary,
city-shaping project**



COUNCIL WILL

- Progress the FAST Corridor to deliver a high-quality rapid transit connection to Western Sydney International Airport.
- Increase connectivity to the airport to support jobs growth and airport viability.
- Create transit- and landscape-oriented development along the route at appropriate locations and at an appropriate scale.

ACTIONS

- 2.1** Finalise investigations into the FAST corridor in collaboration with State and Federal government agencies.
(short term)
- 2.2** Amend the LEP and relevant environmental planning instruments to preserve the FAST corridor.
(short term)
- 2.3** Investigate location of transit- and landscape-oriented development hubs along the FAST Corridor route.
(short term)



LOCAL PLANNING PRIORITY 3

Accessible and connected suburbs

RATIONALE

Communities in Liverpool have strong networks that extend to other suburbs and centres, and importantly to the Liverpool City Centre, which serves as the regional centre for South West Sydney. These networks include community ties as well as access to jobs and services. Sometimes the development of new areas, major roads and other infrastructure put barriers in the way of these connections.

Council is committed to ensuring these connections are retained and improved, and that new suburbs will be linked to the broader Liverpool community and region.

Neighbourhood centres are the heart of Liverpool's suburbs. Council will use placemaking principles to link these centres with other centres and the Liverpool City Centre by a network of pathways and cycleways integrated into system of parks and open space.

An efficient public transport and road network is important to provide access to jobs and services for our community. Council will ensure that barriers are minimised by improving local infrastructure and working with State agencies to ensure that our suburbs are accessible and connected by high-quality roads and public transport services.

Council will collaborate with neighbouring councils to ensure a coordinated approach to open space and transport planning to improve access to local jobs, services and recreation opportunities.



Neighbourhood centres are the heart of Liverpool's suburbs



CONNECTIVITY

COUNCIL WILL

- Link suburbs and centres with each other and Liverpool City Centre by a network of pathways and cycleways integrated into a system of parks and open space.
- Advocate for improvements to public transport connections and timetabling for suburban areas and centres.
- Use placemaking principles to ensure that public transport infrastructure and accessibility to suburban centres is optimised.
- Improve local road access to suburbs and centres.
- Collaborate with neighbouring councils to ensure a coordinated approach to open space and transport planning.

ACTIONS

- 3.1** Liaise with neighbouring councils to improve open space and transport connections **(short term)**
- 3.2** Optimise public transport infrastructure and accessibility as well as connectivity to pathways and cycleways as part of place-making for neighbourhood centres **(short to medium term)**
- 3.3** Liaise with Fairfield and Canterbury Bankstown councils to implement active transport routes around Chipping Norton Lakes, including bridge and road connections **(medium term)**

LOCAL PLANNING PRIORITY 4

Liverpool is a leader in innovation and collaboration

RATIONALE

Liverpool City Council is committed to supporting and leading innovation in our organisation and our community as we develop into a connected smart city. By creating an innovation ecosystem, testing new approaches and working with partners in government, industry and the community, we will secure Liverpool's place as the premier edge city for the Western Sydney Aerotropolis.

Liverpool City Centre will become a rejuvenated river city offering new and diverse housing and employment spaces, anchored by a world-leading Innovation Precinct providing high-value local job opportunities. This area is covered by the Liverpool Collaboration Area Place Strategy, developed by the Greater Sydney Commission in collaboration with Council and other stakeholders. We will maintain our position as an active leader in the strategy's delivery, ensuring the best outcomes are reached for our community.

Key to the success of all our plans is to collaborate and work effectively with stakeholders from the private, public and community sectors. Consultation with the community will be guided by the Community Engagement Strategy 2018-2021. The strategy commits Council to a long-term plan to provide ongoing dialogue and build community capacity and social capital, for people to feel connected and proud of our City, and be able to participate in processes and decisions that affect their lives.

Council will always collaborate with neighbouring councils, Aboriginal Land Councils, State and Federal governments, state agencies, private sector interests and the Western Sydney Planning Partnership to deliver the best outcomes.

COUNCIL WILL

- Be recognised as an innovation leader locally, nationally and globally.
- Work with other councils and the NSW and Federal Government to implement the Western Sydney City Deal.
- Improve digital connectivity.
- Ensure planning controls respond to connected and autonomous vehicles (CAV) without compromising pedestrian amenity.
- Be a leading voice in the Western Sydney Planning Partnership to deliver good planning outcomes in the development of the Western Sydney Aerotropolis.
- Work with adjoining Councils to address cross-border issues.
- Involve the community in strategic planning matters.
- Involve Aboriginal Land Councils in strategic planning matters.
- Collaborate with government agencies to coordinate delivery of local and regional infrastructure.

ACTIONS

- 4.1** Collaborate with government agencies to prepare a local and regional level infrastructure schedule **(short term)**
- 4.2** Work with Greater Sydney Commission and relevant stakeholders to address the Liverpool Collaboration Area Place Strategy through amendments to the LEP **(short to medium term)**
- 4.3** Investigate planning control changes to support CAVs and adaptive reuse of parking infrastructure **(medium term)**



Liverpool is committed to supporting and leading innovation







LIVEABILITY

Our Home

Liverpool in 2050 will become one of Australia's most liveable cities, capitalising on its youth, culturally diverse and harmonious population, proximity to Western Sydney International Airport, and a City Centre close to transport and the amenity of the Georges River.

Council is working to make the entire LGA an attractive, vibrant and healthy place to live, work and play for our diverse community. Council is committed to ensuring that the LGA is accessible and inclusive to all people, including older people and people with a disability. The Liverpool community, through the CSP, has told Council that having a clean, attractive city with ample facilities and community activities is essential. The LSPS survey has also revealed the top two liveability priorities for the community are 'access to parks and recreation options' and 'walkable neighbourhoods'.

Council is committed to ensuring the parks, facilities and amenities the community requires are of high quality and provided close to homes to create walkable suburbs.

Through the Liverpool Housing Strategy, Council is also making sure the right housing is being built in the right places to cater to the many needs of the community, while ensuring local character is respected. This includes increasing affordable housing options, as Liverpool has one of the highest needs for social and affordable housing in the country.

In the City Centre, Council has already changed planning controls to allow mixed-use development and, along with a new City Centre Public Domain Master Plan, seeks to create a functional, high-amenity city centre with a strong 18-hour economy and better opportunities for healthy active transport, such as walking and cycling. We will activate sites across the city for art, events and festivals, improve night-time activities and provide a lively environment for locals that also becomes an internationally renowned destination. By 2050 we will expand our 18-hour economy to become a dynamic 24-hour city.

While Liverpool is experiencing significant change, it is also committed to honouring its local character and rich heritage, with a number of significant buildings and sites protected at the local and state levels, and a commitment to retain the low-scale nature of existing suburbs.

LIVEABILITY

LOCAL PLANNING PRIORITY 5

A vibrant, mixed-use and walkable 24-hour City Centre with the Georges River at its heart

RATIONALE

Liverpool is working to create a vibrant 18-hour economy in the City Centre over the next decade, and then transform into a lively river city by 2050 with a strong 24-hour economy, providing ample space for jobs, homes, entertainment, recreation and education.

Council is working on an ambitious suite of plans and projects to deliver this vision. The City Centre Public Domain Master Plan will guide the development of a city centre that meets the needs of the community now and into the future. This will involve major public domain improvements, including increased urban tree canopy, active transport integration, wayfinding and walkability enhancements, safety improvements and better design standards. This will be complemented by City Activation, Heritage Activation and Night Time Activation strategies to improve the experience of Liverpool residents and visitors.

We will also be embarking on ambitious transformational projects like Woodward Place, which will see the current Woodward Park become Liverpool's own 'Central Park' – an iconic lifestyle precinct providing world-class facilities to support a healthy, connected and diverse population.

The City Centre will refocus around the amenity of a healthy Georges River, connected to parkland and open space with development that is of appropriate scale and which respects the natural character of the river environment.

With a 24-hour economy and a focus on vibrancy, we will need to ensure that extended trading hours in the CBD can occur without being affected by increased residential development and the potential for amenity impacts.

COUNCIL WILL

- Ensure Liverpool City Centre is a vibrant, mixed-use, pleasant and walkable city by providing a high-quality public realm and open spaces; fine grain and diverse urban form; a diverse land use and housing mix, high amenity and walkability; and recognising and celebrating the character of the place and its people.
- Foster a 24-hour economy with a lively and well-integrated mix of activities.
- Investigate and establish destinations (interactive public places) within the City Centre to facilitate walkability and ensure sustainability.
- Refocus the City around the amenity and assets of the Georges River, while ensuring the natural character of the river is protected through development of an appropriate scale.
- Develop a high-quality Georges River and Chipping Norton Lakes open space system addressing integration with the Liverpool City Centre and the local and regional open space network.
- Reduce congestion in the CBD.
- Ensure appropriate levels of parking are available.



**Liverpool is committed
to supporting and
leading innovation**



ACTIONS

- 5.1** Review Development Control Plan (DCP) to ensure the 18-hour economy can be suitably protected from reverse amenity issues. **(short term)**
- 5.2** Incorporate community and cultural facilities in Liverpool Civic Place. **(short term)**
- 5.3** Review LEP and DCP to give effect to City Centre Public Domain Master Plan. **(short term)**
- 5.4** Review LEP to support development, community facilities and linkages at key Council-owned sites in the City Centre. **(medium term)**
- 5.5** Review LEP to ensure alignment and give effect to Woodward Place Masterplan. **(medium to long term)**



Artist's impression of a pedestrian bridge over the Georges River

LIVEABILITY

LOCAL PLANNING PRIORITY 6

High-quality, plentiful and accessible community facilities, open space and infrastructure aligned with growth

RATIONALE

Liverpool City Council is committed to the delivery of high-quality facilities and services that are attractive, flexible and address the needs of the general community. Council supports the central concept that an efficient and effective network of quality and appropriate community facilities is essential to the health, social and economic wellbeing of Liverpool. Council's vision is to create best practice recreation spaces for people that inspire and connect residents, and act as a catalyst for community life.

However, current restrictions around what types of social infrastructure Council is able to raise funds for through development contributions makes it difficult for us to provide the services the community expects in a timely fashion. Council will continue to advocate expansion of the types of facilities we can levy for, including community centres and high-quality embellished parks, and also investigate alternative sources of funding to deliver the amenity the community expects and deserves in new and existing areas.

One of Council's most ambitious projects will be the River Connections plan, which will create a continuous network of accessible, high-quality paths along the Georges River from Casula through the City Centre to Pleasure Point.

COUNCIL WILL

- Deliver a world-class network of community facilities.
- Deliver timely construction of community facilities in new release areas.
- Ensure community facilities, open space and recreation facilities meet the needs of a growing population across the entire LGA.
- Undertake community needs assessment and community engagement prior to constructing new facilities.
- Encourage integrated planning with community facilities for all major new and redeveloped recreation precincts.
- Increase public open space and work with key stakeholders to revitalise and develop parks and open space across the Liverpool LGA.
- Strengthen and promote active transport links between centres and open space.
- Develop the regional riverside parkland as part of a wider plan to reengage communities with the Georges River.



Our vision is to create recreation spaces for people that inspire and connect residents, and act as a catalyst for community life



ACTIONS

- 6.1** Advocate changes to contributions planning and seek alternative funding mechanisms to deliver high-quality facilities **(short term)**
- 6.2** Redevelop Lighthorse Park into a district recreation and open space destination park, including a community centre, and active and passive open spaces. **(medium term)**
- 6.3** Review LEP to give effect to River Connections Program linking green space networks from Casula to Pleasure Point, improving accessibility and visual amenity. **(medium to long term)**
- 6.4** Establish a metropolitan-scale cultural/entertainment facility in the City Centre. **(long term)**



Casula Parklands Adventure Playground

LIVEABILITY

LOCAL PLANNING PRIORITY 7

Housing choice for different needs, with density focused in the City Centre and centres well serviced by public transport

RATIONALE

Forecast.id population projections predict that Liverpool's population will grow to 358,871 by 2036, compared with our 2019 population of 227,312 – an increase of almost 60%.

The Liverpool Local Housing Study 2019 predicts that there will be demand for an additional 43,452 dwellings between 2016 and 2036. Liverpool will need to ensure that the households built are suitable to support the growing population, and located in the right areas.

Population and dwelling forecast

Year	2016	2021	2026	2031	2036
Population	212,232	242,817	276,970	319,304	358,871
Total dwellings	67,738	77,279	87,261	99,632	111,190
Additional dwellings over five years		9,541	9,982	12,371	11,558

Sources: Population – Forecast population projections (Forecast.id); Dwellings and additional dwellings – Liverpool Local Housing Study 2019 (SGS Economics and Planning).

Taking into account existing growth areas and our recent changes to City Centre planning controls to allow for more housing, our Local Housing Study indicates that there's enough zoned land to provide for 90,528 additional dwellings, more than enough to cater for projected demand well into the future. As such, there is no pressure to zone more land for residential development over the next 20 years. Council's preference is for density to be focused

in the City Centre and close to centres with good public transport accessibility, including potential transit- and landscape-oriented development hubs along the Fifteenth Avenue Smart Transit (FAST) Corridor.

Findings from the Local Housing Study indicate there is a mismatch between the types of housing being delivered, and what is needed by the community. For example, the majority of housing in the city centre is two-bedroom apartments, however there is demand from larger family homes in the city centre with more bedrooms. In growth areas, there is a large number of 4-5 bedroom houses being delivered, however, there is demand for smaller housing, including semi-detached housing such as townhouses.

Council acknowledges that a variety of homes will be needed to cater for a diverse population with different needs and incomes. In 2017/2018, less than 2% of new developments were diverse housing options. Liverpool needs housing that is suitable for young families, larger culturally appropriate housing for multi-generational families, more affordable dwellings, and housing for downsizers and those who want to age in place.

Council supports increasing the diversity of housing – including 'missing middle' style developments such as terraces, townhouses and manor houses – but this must respect local character and be in areas close to services and transport. For affordable housing in particular, it is critical that support services are close by.

Council supports an increase in affordable rental housing for the community, with the LGA suffering from one of the highest rates of rental stress in the country. There are currently over 7,000 households in rental stress (meaning more than 30% of income is spent on rent) with more than 4,000 experiencing severe rental stress (more than 50% of income spent on rent).

This is increasing at much faster rates than Sydney more broadly. By 2036 our LGA will have the highest demand for social and affordable housing in the entire Western City District.

Net demand for Social and Affordable Housing

LGA	2016	2026	2036	Change (2016-2036)	% Change (2016-2036)	% Change (Total households)
Blue Mountains	2,253	2,536	2,896	643	29%	15%
Camden	1,688	3,628	6,020	4,332	257%	186%
Campbelltown	5,052	7,758	10,670	5,619	111%	45%
Fairfield	9,464	11,085	12,372	2,908	31%	15%
Hawkesbury	1,929	2,408	2,999	1,070	55%	30%
Liverpool	7,646	12,082	16,465	8,819	115%	60%
Penrith	6,422	9,010	11,340	4,919	77%	37%
Wollondilly	914	1,179	1,652	738	81%	52%
WSCD Area	35,368	49,686	64,415	29,047	82%	31%

Data: SGS Economics & Planning

What is social and affordable housing?

SOCIAL HOUSING is affordable rental housing provided by not-for-profit, nongovernment or government organisations to assist people who are unable to access suitable accommodation in the private rental market and may be at risk of homelessness. Social housing includes public, Aboriginal and community housing, as well as other services and products. It acts as a safety net for the most vulnerable in the community.

AFFORDABLE HOUSING is not the same as social housing. It is also open to moderate income earners that may be struggling to make ends meet, and is around 20-25 per cent below market rental prices. It allows key workers whose household income is not high enough to cover market rent to live and work locally. Affordable housing can be owned by private developers or investors, local governments, charitable organisations or community housing providers (CHPs), but is managed by CHPs.



Council supports increasing the diversity of housing while respecting local character



COUNCIL WILL

- Concentrate residential development in the Liverpool City Centre, in growth areas, in transit- and landscape-oriented development hubs along the Fifteenth Avenue corridor route, and in existing centres with high amenity that are well serviced by public transport.
- Ensure housing typologies are diverse and appropriately located to cater for the entire community.
- Ensure housing supports aging in place principles.
- Ensure a greater proportion of affordable housing is delivered.
- Work with residents, government and other relevant stakeholders to renew social housing that is near end of life and build more diverse and inclusive communities.
- Deliver ongoing renewal and beautification projects in Miller, Cartwright and Ashcroft.

ACTIONS

- 7.1** | Implement the Local Housing Strategy through amendments to the LEP. **(short term)**
- 7.2** | Develop an Affordable Housing Contributions Scheme and amend LEP. **(short term)**
- 7.3** | Partner with State Government to investigate the potential for master planned precincts (such as NSW Land and Housing Corporation properties in Warwick Farm) by rezoning land to improve and increase social and affordable housing. **(short term)**
- 7.4** | Partner with State Government to review the Masterplan for Miller Town Centre. **(short term).**
- 7.5** | Advocate to State Government for more investment in social and affordable housing. **(short term)**
- 7.6** | Monitor, review and update the Local Housing Strategy to ensure sufficient and appropriate housing is delivered to meet community needs. **(medium term)**
- 7.7** | Progress sustainable, high-density transit- and landscape-oriented development along the Fifteenth Avenue Smart Transit Corridor. **(long term)**



LOCAL PLANNING PRIORITY 8

Community-focused low-scale suburbs where our unique local character and heritage are respected

RATIONALE

Our established areas feature suburbs with strong communities, low density and relatively affordable development, and good access to services. Consultation for the LSPS shows that residents of Liverpool's existing suburbs have a strong desire for their areas to maintain their low-density local character into the future.

Council will work to ensure development remains largely low scale and sympathetic to local character. This approach is supported by findings from the Local Housing Study that indicate further rezoning is not required to meet housing growth targets, and that housing targets can be easily accommodated without apartment developments outside of the City Centre and town centres.

In existing centres, Council will undertake design-led planning using placemaking principles to ensure growth occurs that is sympathetic to local character and heritage. We're also working to improve the amenity of our suburbs. We've updated contributions plans to better enable local infrastructure that can meet needs, and we will continue to advocate changes to contributions planning to provide funds for improvements such as open space embellishment and new facilities.

COUNCIL WILL

- Ensure residential development is maintained at a low scale around neighbourhood centres not well-served by public transport.
- Preserve local character of existing suburbs.
- Improve the amenity of local centres.
- Ensure heritage, including Aboriginal heritage, is valued and protected.
- Advocate social and cultural infrastructure in established and new release areas.

ACTIONS

- 8.1** Amend LEP to implement findings of review of dwelling typologies and density around Moorebank Shopping Centre. **(short term)**
- 8.2** Investigate Local Character Statements and Local Character overlays for areas identified as requiring more fine-grain planning responses. **(short term)**
- 8.3** Review and update heritage provisions in LEP, and address anomalies. **(short term)**
- 8.4** Undertake design-led planning using placemaking principles for neighbourhood and district centres. **(medium term)**



Suburbs will largely remain low scale



LIVEABILITY

LOCAL PLANNING PRIORITY 9

Safe, healthy and inclusive places shaping the wellbeing of the Liverpool community

RATIONALE

The future of Liverpool is vibrant, active and healthy. While Western Sydney residents should enjoy the same health outcomes as those in other parts of Sydney, currently this is not the case, with significantly higher rates of obesity. This is due to a number of reasons, including high car dependence, relatively lower levels of spare time due to commuting and traffic, poor access to public and active transport, and fewer recreation opportunities.

A healthy built environment is a key motivator for the future. We are working to build more walking and cycling trails, opening access to our natural assets, focusing development near public transport to encourage mode shift, and ensuring there is enough open space and recreational facilities to meet growing demand. New urban centres will be compact and transit-oriented, to maximise opportunities for walking and active transport.

In Council's draft LSPS consultation, safety was indicated as a major community concern. In 2019 Liverpool in 2019 was recognised as a Pan Pacific Safe Community – a strong, cohesive, vibrant community, where citizens actively participate in public life. We have identified domestic violence, road accident trauma, drugs and alcohol, and fall-and-trip-related injuries as key issues, and will work to continuously improve safety.

Council is committed to embedding Crime Prevention through Environmental Design (CPTED) principles across the LGA. This crime prevention strategy focuses on the planning, design and structure of cities and neighbourhoods in order to reduce opportunities for criminal behaviour. The DCP has been developed to encourage safe design, and Council will continue to provide high-quality environments in which our residents feel

safe and secure, including through building design, maintenance works, landscaping, lighting, and open and public space design.

Council will also be improving the safety of our residents during natural disasters by ensuring hazard data is up to date, not locating development in high hazard areas, and addressing environmental issues that place the community at risk, such as the urban heat island effect.



**The future of Liverpool
is vibrant, active and
healthy**



COUNCIL WILL

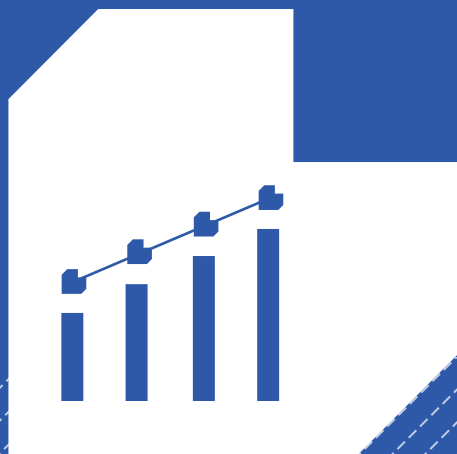
- Support the health and wellbeing of the community through healthy urban design and placemaking.
- Advocate better public transport outcomes.
- Focus development close to public transport.
- Ensure new centres are compact and transit-oriented.
- Work with stakeholders to reduce road trauma.
- Work with partners to reduce crime.
- Ensure the built environment incorporates CPTED principles.
- Facilitate the development and promotion of integrated walking and cycling networks within and between centres.
- Prioritise pedestrian movement in the CBD and beyond.
- Investigate locations of active transport connections into adjoining LGAs.
- Continue to update hazard mapping to ensure safety.
- Address the urban heat island effect.

ACTIONS

- 9.1** Amend DCP to reflect outcomes of climate resilience study. **(short term)**
- 9.2** Liaise with Fairfield and Canterbury Bankstown councils to implement active transport routes around Chipping Norton Lakes, including bridge and road connections. **(medium term)**







PRODUCTIVITY

Our Jobs

Liverpool in 2050 will be the premier edge city to Western Sydney International Airport – a jobs-rich, attractive destination drawing in jobs, business, tourism and investment, supporting the operation of a successful 24-hour international airport.

Liverpool has a long-standing role as the regional centre for the South West, reflecting its history and strategic location near major transport infrastructure, such as the M5 and M7 motorways, and T2, T8 and freight lines.

The City boasts a major health and education precinct including Liverpool Hospital – the largest standalone hospital in NSW – three major universities and a TAFE. It also supports a significant manufacturing and logistics sector.

Recent infrastructure announcements mean that Liverpool has significant potential to strengthen its productivity and capitalise on its status as an attractive, jobs-dense centre. The opening of the Western Sydney International Airport will catalyse investment in a wide range of knowledge-intensive industries. The Western Sydney Aerotropolis will also generate significant employment and economic opportunities for Liverpool and the broader South West region.

Changes to Liverpool's City Centre planning controls means that Liverpool is well-placed to accommodate additional jobs and housing growth. With its position on the Georges River, and following additional rail and rapid transit connections set out in the State Government's Future Transport 2056 Strategy are complete, there is opportunity to create a high amenity Centre that will be the natural location

for businesses related to the airport. Liverpool will become the premier edge city to Western Sydney International Airport.

A key challenge for Liverpool's productivity is managing the infrastructure and employment land needed to sustain projected population growth and economic opportunities. A key action will be investigating ways to increase or better manage existing industrial and employment lands to cater for the jobs of the future.

Another challenge is poor access to knowledge jobs due to long journey times to other centres and significant road congestion. While Liverpool has a goal of increasing opportunities to work in the LGA – our LSPS survey indicated that the community's number one Productivity priority is 'creating more jobs in the local area' – the reality is that many residents need to leave the LGA for employment. Currently close to 70% of Liverpool's residents leave the LGA for work. Liverpool will work to ensure that these residents can reach their jobs in a satisfactory time, and that workers outside the LGA can reach the abundant opportunities provided by Liverpool with ease. With a significant migrant and refugee intake, Liverpool will also work to increase opportunities for our new residents.

We will advocate for delivery of transport commitments and attract new business investment to support an increase in jobs of 200,000 in Western Sydney over the next 20 years, as part of our commitment to the Western Sydney City Deal. Council will also work to meet its stated jobs target of 2500 per year, as part of our Economic Development Strategy 2019-2029.

PRODUCTIVITY

LOCAL PLANNING PRIORITY 10

A world-class health, education, research and innovation precinct

RATIONALE

Health and education play a significant role in Liverpool, with Liverpool Hospital, Ingham Institute of Applied Medical Research, the University of NSW (UNSW), Western Sydney University (WSU), University of Wollongong (UOW), South West Private Hospital and TAFE NSW in the local area. There are more than 15,000 health and knowledge workers in the LGA, accounting for about 20% of all workers. This could increase to 30,000 by 2036 and even higher if the right actions are taken.

Liverpool City Centre has significant advantages that could reinforce its position as a health leader and help it to become a world-class health, education, research and innovation precinct based around Liverpool Hospital. This includes close access to a train line, a river providing significant amenity potential, availability of commercial land and a diverse population.

Liverpool will capitalise on these advantages, and grow its Innovation Precinct to cater for the significant growth in health and knowledge workers expected in the next 20 years, and become a global leader in collaboration for health, education and research.

COUNCIL WILL

- Lead development of the Liverpool Innovation Precinct.
- Ensure land uses planning supports the operation and growth of the precinct for all in the health, education and innovation ecosystem.
- Support tertiary institutions, including vocational and technical training opportunities.

ACTIONS

- 10.1** Amend LEP to support the operations and growth of the Liverpool Innovation Precinct.
(short term)
- 10.2** Amend LEP applying to Warwick Farm to support the existing horse training facilities, and provide for innovation/employment uses and appropriately located residential/mixed use development.
(short term)
- 10.3** Collaborate with universities, TAFE and other education providers to increase opportunities in the LGA.
(short term)



Liverpool has significant advantages that could reinforce its position as a health leader



LOCAL PLANNING PRIORITY 11

An attractive environment for local jobs, business, tourism and investment

RATIONALE

Liverpool is quickly becoming a business and commercial destination of choice. Due to its proximity to the Western Sydney International Airport, Liverpool's attractiveness as a location for commercial and industrial enterprise will grow significantly over the next 30 years, including in aerospace, agribusiness, education, health, and logistics and transport sectors. Liverpool's goal is to create a domestically thriving, globally known business landscape that prioritises the expansion and innovation of industry to promote its identity to the world.

Liverpool's Community Strategic Plan (CSP) directs Council to generate opportunity across Liverpool, while our draft LSPS survey indicated a demand for local, high-paying jobs. Council is committed to attracting business for economic growth and employment opportunities, and have set an ambitious growth target of 2500 new jobs a year to 2029.

We have already changed planning controls in the city centre to facilitate new jobs and housing. Council has completed an Economic Development Strategy to create new job opportunities, develop local capacity, market Liverpool as a business destination, and activate and develop vibrant places to attract new residents, visitors and workers. We have also developed an International Trade Engagement Strategy to leverage opportunities from the Western Sydney International Airport and market the potential of Liverpool to the world.

With about 70% of residents currently leaving Liverpool to get to work, a focus for Council will be to increase the number of job opportunities closer to home. We will continue to advocate the fast and frequent public transport services needed to boost Liverpool's attractiveness as a place for jobs, business, tourism and investment.

COUNCIL WILL

- Create an environment to attract, train and retain a skilled workforce to support contemporary business needs.
- Reduce the proportion of people leaving the LGA for work.
- Grow jobs in the health and education sectors.
- Support small businesses including start-ups.
- Provide opportunities for refugee and migrant populations to enter the workforce.
- Continue advocacy for city shaping transport infrastructure to boost jobs growth.
- Provide infrastructure, facilities and services needed to support and facilitate visitor economy growth in light of the opportunities provided by Western Sydney International Airport.
- Enhance tourist attractions, including beautification of Georges River and developing Chipping Norton Lakes.
- Improve connections from the City Centre to the Georges River, and open and active space networks.
- Strengthen Casula Powerhouse's position as the leading Arts Centre in South West Sydney.



**Liverpool is quickly
becoming a business
destination of choice**



PRODUCTIVITY

ACTIONS

- 11.1** Review LEP to align with Centres and Corridors study. **(short term)**
- 11.2** Amend LEP to rezone Georges River precinct north of Newbridge Road as a mixed-use zone to support the Liverpool CBD and Innovation Precinct, with an extensive open space system and cross-river linkages. **(short term)**
- 11.3** Pursue LEP changes to support innovation/research/health/advanced manufacturing in the Liverpool Innovation Precinct. **(short term)**
- 11.4** Pursue LEP changes necessary to support tourism and visitor accommodation. **(short term)**
- 11.5** Amend LEP to increase land-use flexibility for festival uses. **(short term)**
- 11.6** Work with TfNSW to bring forward extension of Sydney Metro City and Southwest and investigate a preferred alignment. **(short term, with delivery in the long term)**
- 11.7** Progress the Fifteenth Avenue Smart Transit Corridor project. **(short term)**
- 11.8** Advocate a fast rail service to the Liverpool City Centre from Sydney CBD, and enhanced integration with future rail links. **(short term)**
- 11.9** Review and update LEP and DCP to ensure statutory planning controls protect key freight routes and employment lands from sensitive land uses. **(short to medium term)**
- 11.10** Review LEP and DCP to give effect to City Centre Public Domain Master Plan. **(short to medium term)**

- 11.11** Work with Transport for NSW to create links from Liverpool Train Station to the Georges River and investigate opportunities for transport interchanges at Moore Point (CBD extension east of the Georges River). **(medium term)**



LOCAL PLANNING PRIORITY 12

Industrial and employment lands meet Liverpool's future needs

RATIONALE

Prospects for industrial and employment projects in Liverpool are strong, given proximity to transport links such as the M5 and M7, and large projects including Western Sydney International Airport and the Moorebank Intermodal Terminal.

Council has conducted a number of industrial land studies, which indicate that there will be a future lack of zoned and serviced industrial land, requiring Council to investigate suitable areas in the LGA. New industrial land around the Western Sydney International Airport will contribute to meeting demand in the medium-long term for larger industrial uses. However there is a projected shortage of land zoned for local service related industrial uses after 2026. We will develop an Industrial and Employment Lands Strategy to ensure there is enough serviced employment land to sustain projected population growth, and which is also flexible enough to support the needs of future businesses including knowledge based and advanced manufacturing activities.

We will focus on opportunities provided by the establishment of the airport, as well as strengthening our health, education and innovation precinct.

Land for **LARGER INDUSTRIAL USES** refers to **IN1 (General Industrial)** and **IN3 (Heavy Industrial) zones**, and include uses such as manufacturing, freight, logistics, warehousing and distribution.

Land for **LOCAL SERVICE RELATED INDUSTRY** refers to the **IN2 (Light Industrial) zone**, and includes uses such as maintenance and repair uses and services supporting building and construction.



We will focus on opportunities provided by the airport, and strengthen our Innovation Precinct



COUNCIL WILL

- Monitor land development to ensure there is enough serviced employment and industrial land to meet future need for a number of price points from start-ups to multinationals.
- Prepare flexible planning controls to ensure businesses of the future are not unduly restricted.
- Leverage opportunities created by Western Sydney International Airport to promote agribusiness, food export and tourism.
- Strengthen connectivity between Liverpool City Centre and neighbourhood and district centres.

ACTIONS

- | | |
|-------------|--|
| 12.1 | Review LEP to align with Industrial and Employment Lands Strategy.
(short term) |
| 12.2 | Review LEP and DCP for employment lands to address a future transition to "new industries" in appropriate locations.
(short term) |
| 12.3 | Review industrial land zones under LEP to enable innovative employment uses to support Liverpool Innovation Precinct.
(short term) |
| 12.4 | Investigate provision of new industrial land, including light industrial (IN2), between the airport and the CBD, including extension of industrial zoned land in Austral, to ensure ongoing supply.
(short to medium term) |

LOCAL PLANNING PRIORITY 13

A viable 24-hour Western Sydney International Airport growing to reach its potential

RATIONALE

Liverpool supports the delivery of Sydney's first 24-hour international airport, and is dedicated to ensuring the comparative advantage of a curfew-free airport is protected.

Inappropriate development around Western Sydney International Airport could constrain airport operations over the long term, affecting the region's productivity, while also having negative impacts on local communities due to aircraft noise. For these reasons, Liverpool City Council advocates a precautionary approach to the consideration of all land around the airport, recognising that extensive international experience has shown that development, particularly residential development, in proximity to airport operations acts as a constraint to and limitation on the success and opportunities of an airport.

Council will continue to ensure that a precautionary approach and best-practice measures are put in place to protect any new residential communities and the viability of the airport.

COUNCIL WILL

- Protect the airport's competitive advantages as a curfew-free airport.
- Identify employment lands in line with industrial and commercial demand and development needs.
- Ensure a precautionary approach is taken to residential development in the Aerotropolis.

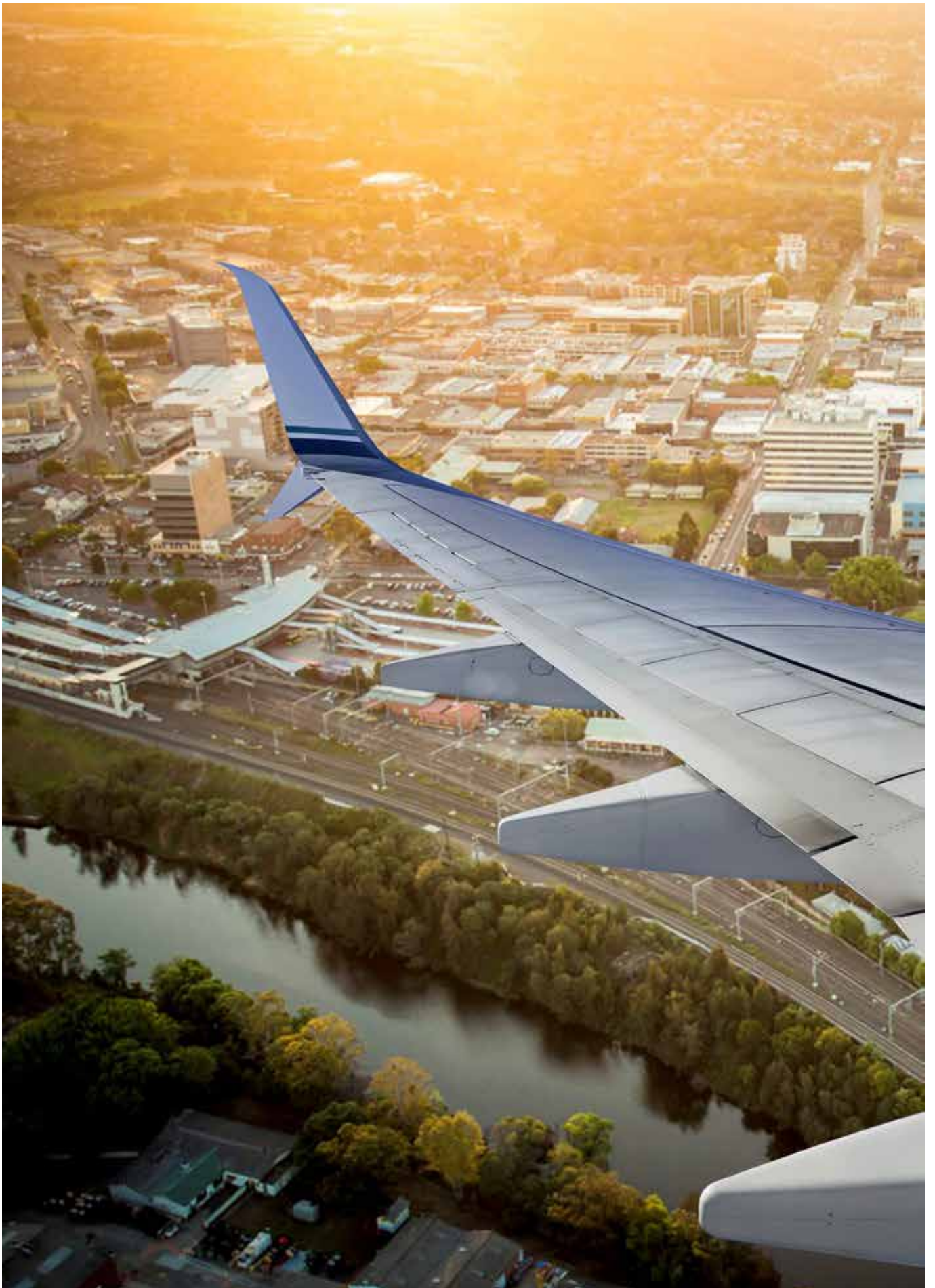
ACTIONS

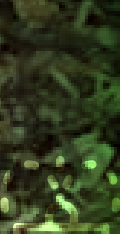
- 13.1** | Ensure through the Western Sydney Planning Partnership that future planning in the Aerotropolis supports the airport's economic potential and reduces conflicting uses that could inhibit future growth and the curfew free status of the airport. **(short term)**
- 13.2** | Work collaboratively with the Western Sydney Planning Partnership to implement the Western Sydney City Deal and ensure the best planning outcomes for the Aerotropolis. **(short to medium term)**



**Liverpool supports the
delivery of Sydney's first
24-hour international airport**









SUSTAINABILITY

Our Environment

Liverpool is rich in nature and this will be protected into the future. Bordered by the Georges and Nepean Rivers, it has significant and unique bushland, biodiversity, and green and blue networks. However, Liverpool is currently one of the fastest growing cities in NSW, and therefore the natural environment is exposed to pressures from development and urban sprawl.

Liverpool City Council recognises the importance of protecting our natural environment and using our resources wisely. Indeed, \$27 of every \$100 in operational expenditure goes towards the environment.

We are working towards fostering a partnership with our community to better protect, support and conserve our natural resources and environment. A key direction in Council's CSP – Our Home, Liverpool 2027 – is 'Strengthening and Protecting our Environment', with the following goals:

- Manage the community's disposal of rubbish;
- Protect and enhance bushland, rivers and the visual landscape;
- Encourage sustainability, energy efficiency and the use of renewable energy;
- Exercise planning controls to create high-quality, inclusive urban environments; and
- Develop, and advocate for, plans that support safe and friendly communities.

Through the LSPS survey, the community has said the top priorities are 'having plentiful trees and canopy cover' and 'improved access to nature and waterways'. Council is working on plans to protect and increase tree canopy cover in order to improve amenity, reduce air pollution and tackle the urban heat island effect.

Council also acknowledges the risks posed by climate change and is committed to playing its part in mitigating climate change and adapting to the threats posed by climate change, particularly implementing measures to reduce the urban heat island effect.

SUSTAINABILITY

LOCAL PLANNING PRIORITY 14

Bushland and waterways are celebrated, connected, protected and enhanced

RATIONALE

Extensive green and blue corridors traverse the Liverpool LGA. Liverpool sits within the Cumberland Plain, home to a rich array of wildlife and plants. Approximately one-third of our land is covered by native vegetation, supporting extensive biodiversity, including 10 threatened ecological communities, 12 threatened flora species and 57 threatened fauna species. Council will work to protect and restore naturally occurring ecosystems and habitat based on best-practice biodiversity conservation principles. The Liverpool LGA covers substantial portions of the Georges River catchment and the Hawkesbury-Nepean River catchment. It also covers significant tributaries of the Hawkesbury-Nepean River system, including South Creek, Kemps Creek and Badgerys Creek. The health of our waterways is under pressure from development, catchment disturbance, land use transformation and land clearing. With rapidly expanding development, it is vital that waterways, open space and bushland are better protected.

There are significant opportunities to protect, restore and connect areas of high-value bushland, particularly around waterways, that can increase the sustainability and resilience of communities in the LGA. As part of implementing the State Government's Green Grid, Liverpool will work to increase green space, canopy cover, connectivity and recreation opportunities, particularly along the Georges River/Chipping Norton Lakes system, Cabramatta Creek and South Creek. We have also identified the potential for enhancements and naturalisation work around Brickmakers Creek. Increasing urban tree cover and Green Grid connections will provide for healthier communities and more resilient, liveable cities.

Council is also committed to incorporating Water Sensitive Urban Design principles that consider and preserve the natural water cycle, and reduce stormwater impacts on waterways. In 2017/2018

the Mid Georges River was given an average ecological health rating of B+, and Council will work to continually improve river health and implement water-sensitive urban design, with a view to making the Georges River swimmable in the future.

COUNCIL WILL

- Protect and restore naturally occurring ecosystems and habitat based on best practice biodiversity conservation principles.
- Minimise threats to listed species, populations and communities.
- Establish and enhance a Green and Blue Grid corridor network.
- Support implementation of South Creek Green Grid Corridor.
- Improve gateway entry experience into LGA, including through landscaping.
- Substantially increase tree canopy cover.
- Implement water-sensitive urban design.
- Improve catchment management and ensure policies and planning instruments work to improve river and waterway health.
- Work towards reinstating more natural conditions in highly modified urban waterways.
- Enhance the environmental qualities of the Georges River to make it swimmable.
- Create visible, safe and accessible points of entry to the Georges River.





There are significant opportunities to protect, restore and connect areas of high-value bushland



LOCAL PLANNING PRIORITY 15

A green, sustainable, resilient and water-sensitive city

RATIONALE

Council's CSP has a directive to strengthen and protect the environment, and we are working hard to create a city that has sustainability and resilience at its core. In our survey for this draft LSPS, the most repeated words when asked to describe Liverpool in the future were: clean, green, safe, sustainable and vibrant.

Liverpool faces a number of challenges on its journey to meet this vision. Western Sydney faces more extreme heat events than in the east, due to both geography and the urban heat island (UHI) effect. The UHI effect is expected to increase in Sydney as urban development continues and temperatures increase with climate change.



The community has expectations and aspirations for environments that are comfortable and pleasant, visually appealing and that contribute to health, safety and wellbeing. Through consultation, the community has said sustainable urban design is an important priority. To achieve this, the effects of urban heat need to be considered and addressed, including mitigation responses to urban heat such as design and construction techniques, material selection, and green and blue infrastructure.

Council is also working to address climate change. The highest proportion of the LGA's

ACTIONS

- 14.1** Review Environmentally Significant Land overlay in LEP to ensure protection of areas of high ecological conservation value. **(short term)**
- 14.2** Review LEP to ensure protection of biodiversity around waterways. **(short term)**
- 14.3** Review LEP to implement Green and Blue grid study findings. **(short term)**
- 14.4** Develop a strategy to increase tree canopy cover in the LGA. **(short term)**
- 14.5** Advocate protection corridor around Badgerys Creek. **(short term)**
- 14.6** Investigate potential koala protection corridor. **(short term)**
- 14.7** Develop a Strategic Urban Biodiversity Framework, dependent on finalisation of State Government's Greener Places policy. **(short term)**
- 14.8** Create green entryways to LGA along major road entry points. **(medium term)**

SUSTAINABILITY

carbon emissions comes from residential housing. Council is committed to ensuring all development occurs sustainably, however with most residential development occurring through exempt and complying development pathways, and with no ability to require residential building standards to exceed that set by the State Government's BASIX controls, there is limited control in this space. However, in areas where Council does have influence, we will work to ensure sustainability and urban heat issues are addressed appropriately.

Where there are inconsistencies between State policy instruments and broader strategic goals – such as a commitment to reach net zero carbon emissions by 2050 – Council will advocate better alignment in order to protect amenity and sustainability. For example, Council wants to ensure low-density housing has backyards capable of supporting mature vegetation, with adequate space for recreation, stormwater filtration and attenuation of the urban heat island effect. We want our community's housing to be safe, efficient and comfortable.

Council will work to reduce emissions where possible, implementing recommendations from climate change and resilience studies, and updating relevant environmental sustainability strategies. We will seek to address air pollution issues in the LGA, noting that most air pollution issues arise from activities outside of Council's control.

We will also work to create a water-sensitive city. With changing climate and urban heat, we need to maximise water resources and increase water security to respond to increasing temperatures and heatwaves. This involves improving irrigation, water re-use and capture measures within open space areas, and implementing and integrating WSUD into all developments.



**The community's vision
for Liverpool is clean,
green, safe, sustainable
and vibrant**



COUNCIL WILL

- Ensure development is located appropriately and that natural hazards are avoided or mitigated.
- Encourage sustainability, energy efficiency and renewable energy across the LGA.
- Advocate improvements to residential building codes and State planning policies to better align with State net zero carbon emission aspirations.
- Encourage water-sensitive urban design on new development.
- Support water efficiency and alternative sources of water for resilient whole-of-water-cycle management.
- Review landscape and street tree planting strategies and guidelines.
- Substantially increase overall tree canopy across the LGA, including the City Centre.
- Pursue opportunities with utilities to deliver integrated energy water and waste infrastructure where community benefits are delivered.
- Pursue waste outcomes that are safe, efficient, cost-effective, maximise recycling and that contribute to the built form and liveability of the community.



ACTIONS

- 15.1** Review LEP to suitably address sustainability in line with climate change study and resilience study. **(short term)**
- 15.2** Review LEP and DCP to address sustainable waste outcomes. **(short term)**
- 15.3** Review LEP and DCP to address the Urban Heat Island Effect. **(short term)**
- 15.4** Review DCP to encourage new commercial and industrial buildings to be rooftop solar ready. **(short term)**
- 15.5** Review DCP to prioritise low-carbon initiatives in future developments such as adaptive building designs, precinct-level car parking strategies and energy-efficient, water-efficient and energy generating precinct design. **(short term)**
- 15.6** Advocate for changes to Exempt and Complying Development Code to ensure tree canopy cover can be increased in line with State directives. **(short term)**
- 15.7** Advocate for increases to BASIX and Section J of the National Construction Code in line with the State Government's net zero by 2050 aspirations. **(short term)**

LOCAL PLANNING PRIORITY 16

Rural lands are protected and enhanced

RATIONALE

Sydney's peri-urban food bowl and its city fringe farmers play a vital role in feeding the city's residents. Each year, the Greater Sydney region generates around \$660 million in agricultural produce. Liverpool's peri-urban area alone is responsible for about 12.5% of this value, with significant industries supplying poultry, fresh vegetables, mushrooms, milk and more to the local population.

The value of agricultural activity will be greatly increased due to the development of Western Sydney International Airport, particularly in the proposed Agribusiness precinct identified in the Western Sydney Aerotropolis draft Stage 1 Land Use and Infrastructure Implementation Plan (LUIIP). Liverpool is in a unique position to feed a growing international hunger for high-quality fruit, vegetables, meat and dairy.

Council is committed to supporting the development of new agricultural industry in the agribusiness precinct. We are also part of the new Future Food Systems Cooperative Research Centre (CRC), which will investigate ways to transform Liverpool into a regional food hub featuring high-tech agriculture and easy access to the international export market.

Liverpool's existing productive lands, however, are increasingly threatened by conflicting uses, particularly encroachment of residential. We want to ensure that this land and the jobs it provides are protected and enhanced, both to the West of the Aerotropolis, where Council's LEP shall apply, and within the LUIIP, where Council continues to advocate for the sensible protection of rural lands.

Rural land should be protected until there is a strong justification for urban development that cannot be met by existing zoned land. Solutions should be developed so that existing industries, including those rural activities east of the airport, can be maintained and their value increased as a result of

SUSTAINABILITY

the Western Sydney Aerotropolis, until needed for other urban uses. Some existing uses will not be able to transition into high-intensity production close to the airport, as envisaged by the LUIP, for example poultry, as a 24-hour airport may have adverse effects on production, and impact viability.

Our rural, productive lands not only support local jobs, they play a role in boosting city resilience. Having produce close to their intended market reduces supply chain waste, reduces food miles and helps protect against potential fuel price shocks. It also works to support biodiversity and lessen the urban heat island effect.

Liverpool recognises the contribution of peri-urban agriculture to city resilience, sustainability, liveability and the economy, and will work to ensure that this valuable agricultural land is protected.



Liverpool is in a unique position to feed a growing international hunger for high-quality fruit, vegetables, meat and dairy



COUNCIL WILL

- Ensure agricultural land is protected and enhanced to support the rural economy, ecosystem services and natural scenic landscapes.
- Manage land use conflict by supporting pre-existing agricultural land uses in the case of nuisance complaints and in a manner consistent with the Right to Farm Policy.
- Advocate the sensible, staged rezoning of land in growth areas.
- Protect land from future urban expansion west of the future Outer Sydney Orbital.
- Protect and promote sustainable rural employment opportunities, including rural tourism.
- Take a lead role in the Future Food Systems CRC to support local agricultural industries.

ACTIONS

- 16.1** Review LEP to give effect to Rural Lands Study. **(short term)**
- 16.2** Review LEP and DCP to protect against development that detracts from Liverpool's scenic values, in line with findings of the Scenic Lands Study. **(short term)**
- 16.3** Investigate placemaking opportunities in Wallacia, including addressing transition of development controls from Liverpool LGA to Penrith LGA **(medium term)**
- 16.4** Review the Rural Lands Study every four years to ensure land use standards reflect trends in agriculture and can support the sensible growth of an agriculture industry to support opportunities provided by Western Sydney International Airport and to protect natural landforms and rural lifestyles. **(medium to long term)**

IMPLEMENTATION, MONITORING AND REPORTING.



IMPLEMENTATION, MONITORING AND REPORTING

Implementation

The LSPS communicates Liverpool City Council's strategic land use planning vision for the next 30 years. It informs what type of growth will occur in the LGA, where it will occur and when. To realise this vision, amendments will be required to Council LEP and DCP, which provide the delivery framework for Council's strategic planning. Additional strategies will be prepared, existing strategies will be implemented and Council will advocate for new State and Federal programs and infrastructure to be delivered.

The LSPS sets out actions to deliver on the planning priorities in order to meet the community's future vision for Liverpool.

LEPs

LEPs are the principal statutory document that establishes the land use planning controls for an LGA. Through zoning, development standards and other local provisions the LEP provides the legal framework to ensure development is appropriate and reflects the community's vision for land use in the LGA.

DEVELOPMENT CONTROL PLAN

Development Control Plans are non-statutory plans that provide detailed planning and design guidelines, and development controls to support the LEP.

Monitoring and review

Council will monitor, review and report on its LSPS to ensure that its planning priorities are being achieved. Council will use the existing Integrated Planning and Reporting framework under the Local Government Act 1993 for the purpose of monitoring implementation of the LSPS.

The LSPS will play an important role in Council's resourcing strategy, with preparation of strategies and studies required by this plan funded in the four-year delivery program and annual operational plans.

Council will conduct a review of the LSPS in 2021 and again every four years to align the review period with Council's overarching Community Strategic Plan and existing Integrated Planning and Reporting framework under the *Local Government Act*. Regular reviews will ensure that the LSPS continues to reflect the community's vision.

TEN-YEAR COMMUNITY STRATEGIC PLAN, OUR HOME, LIVERPOOL 2027

Our Home, Liverpool 2027 is Council's 10-year Community Strategic Plan (CSP). It is the highest level plan that shows where the community wants to be in 10 years' time, what needs to be done to achieve this, and how Council and the community will know when this has been achieved.

Our Home, Liverpool 2027 was created in consultation with the community of Liverpool and sets four key directions that address the quadruple bottom line. It is used by Council and other agencies and stakeholders to guide future direction, policy and service delivery.

FOUR-YEAR DELIVERY PROGRAM - 2017-2021

The Delivery Program translates the directions of the Community Strategic Plan into strategies that will guide Council for the next four years. It is the statement of commitment to the community for each newly elected term of office. The Delivery Program cascades down from the Community Strategic Plan to guide Council's for each newly elected term of office.

ONE-YEAR OPERATIONAL PLAN 2019/20

The Operational Plan is reviewed annually and details the actions that Council will undertake within that financial year. It is directly influenced by the Community Strategic Plan and Delivery Program to realise the community's prospects for the future. It also includes a detailed budget and Capital Works Program for the year.

Council will deliver actions that will work towards accomplishing the directions in the Community Strategic Plan. Council will keep track of progress in the Delivery Program and Operational Plan through:

- Six-monthly reports to Council and the community which detail program and budget progress;
- An Annual Report at the end of each financial year which includes a thorough financial report and overview of all Council's spending and operations. This will be published in a full report format as well as a short community snapshot; and
- A cumulative report at the end of Council's four-year term which details Council's financial position and progress against all the activities outlined in the Delivery Program.

Measuring Progress: Performance Measures

Council plans to use two types of indicators. These are:

COMMUNITY INDICATORS AND TARGETS

To track trends in quality of life for people in Liverpool. These are included in the Community Strategic Plan and will be reported in the Annual Report and the End of Term Report. Community indicators and targets are not intended to measure Council's performance as Council does not control all of the elements which may contribute towards it.

KEY PERFORMANCE INDICATORS

Measures which indicate whether a service is working well or is improving. Collectively, these indicators assist Council, all levels of government, business, community organisations and other stakeholders to have an understanding of conditions, experiences and priorities in Liverpool.

SHORT TERM

Now-2020/2021

MEDIUM TERM

2021/2022-2028/2029

LONG TERM

2029/2030+

IMPLEMENTATION FOR CONNECTIVITY

Measures:

- Delay from congestion
- Use of public transport
- Use of active transport
- Public transport travel times
- Infrastructure projects
- Number of partnerships developed

PLANNING PRIORITY 1

Active and public transport reflecting Liverpool's strategic significance

PLANNING PRIORITY 2

A rapid smart transit link between Liverpool and Western Sydney International Airport

PLANNING PRIORITY 3

Accessible and connected suburbs

PLANNING PRIORITY 4

Liverpool is a leader in innovation and collaboration

PLANNING PRIORITY 1

Active and public transport reflecting Liverpool's strategic significance

Relationship to other plans and policies

Metropolitan Plan Direction	District Plan Priority	CSP Direction
1. A city supported by infrastructure 6. A well connected city	1. Planning for a city supported by infrastructure 7. Establishing the land use and transport structure to deliver a liveable, productive and sustainable Western Parkland City 9. Growing and strengthening the metropolitan cluster 11. Growing investment, business opportunities and jobs in strategic centres	Generating opportunity

Action	2019/20-2020/21	2021/22-2028/29	2029/30+
1.1 Update CBD Parking Strategy. (short term)	✓		
1.2 Review and amend LEP to reflect outcomes of Transport and Traffic Study. (short term)	✓		
1.3 Advocate the prompt delivery of the South-West rail line extension from Leppington to Western Sydney International Airport. (short term)	✓		
1.4 Advocate a terminal interchange at Western Sydney International Airport (short term)	✓		
1.5 Advocate a fast rail service to the Liverpool City Centre from Sydney CBD, and enhanced integration with future rail links. (short term)	✓		
1.6 Advocate a Western Sydney Aerotropolis/Airport stop on future high speed rail network. (short term)	✓		
1.7 Work with TfNSW to bring forward extension of Sydney Metro City and Southwest and investigate a preferred alignment. (short term planning, with delivery in the long term)	✓		✓
1.8 Upgrade Edmondson Avenue from Fifteenth Avenue to Bringelly Road. (medium term)		✓	
1.9 Work with Transport for NSW (TfNSW) on an extension of the T-way from Hoxton Park Road south to Edmondson Park Station. (medium term)		✓	
1.10 Investigate extension of the FAST Corridor to Holsworthy Station. (short term planning, with delivery in the long term)	✓		✓

IMPLEMENTATION FOR CONNECTIVITY

PLANNING PRIORITY 2

A rapid smart transit link between Liverpool and Western Sydney International Airport

Relationship to other plans and policies

Metropolitan Plan Direction	District Plan Priority	CSP Direction
1. A city supported by infrastructure 6. A well connected city 7. Jobs and skills for the city	1. Planning for a city supported by infrastructure 7. Establishing the land use and transport structure to deliver a liveable, productive and sustainable Western Parkland City 8. Leveraging industry opportunities from the Western Sydney Airport and Badgerys Creek Aerotropolis 9. Growing and strengthening the metropolitan cluster 11. Growing investment, business opportunities and jobs in strategic centres	Generating opportunity

Action		2019/20-2020/21	2021/22-2028/29	2029/30+
2.1	Finalise investigations into the FAST corridor in collaboration with State and Federal government agencies. (short term)	✓		
2.2	Amend the LEP and relevant environmental planning instruments to preserve the FAST corridor. (short term)	✓		
2.3	Investigate location of transit- and landscape-oriented development hubs along the FAST Corridor route. (short term)	✓		

PLANNING PRIORITY 3

Accessible and connected suburbs

Relationship to other plans and policies

Metropolitan Plan Direction	District Plan Priority	CSP Direction
1. A city supported by infrastructure 6. A well connected city	1. Planning for a city supported by infrastructure 7. Establishing the land use and transport structure to deliver a liveable, productive and sustainable Western Parkland City	Generating Opportunity

Action	2019/20-2020/21	2021/22-2028/29	2029/30+
3.1 Liaise with neighbouring councils to improve open space and transport connections (short term)	✓		
3.2 Optimise public transport infrastructure and accessibility as well as connectivity to pathways and cycleways as part of place-making for neighbourhood centres (short to medium term)	✓	✓	
3.3 Liaise with Fairfield and Canterbury Bankstown councils to implement active transport routes around Chipping Norton Lakes, including bridge and road connections (medium term)		✓	

IMPLEMENTATION FOR CONNECTIVITY

PLANNING PRIORITY 4

Liverpool is a leader in innovation and collaboration

Relationship to other plans and policies

Metropolitan Plan Direction	District Plan Priority	CSP Direction
2. A collaborative city	2. Working through collaboration	Leading through collaboration

Action	2019/20- 2020/21	2021/22- 2028/29	2029/30+
4.1 Collaborate with government agencies to prepare a local and regional level infrastructure schedule (short term)	✓		
4.2 Work with Greater Sydney Commission and relevant stakeholders to address the Liverpool Collaboration Area Place Strategy through amendments to the LEP (short to medium term)	✓	✓	
4.3 Investigate planning control changes to support CAVs and adaptive reuse of parking infrastructure (medium term)		✓	

DRAFT

IMPLEMENTATION FOR LIVEABILITY

Measures:

- Dwelling approvals by location and type
- Net new dwellings approved and completed
- Housing costs as a percentage of household
- Percentage of affordable dwellings
- Percentage of new housing as diverse dwellings
- Number of new or upgraded community facilities
- Accessibility to open space

PLANNING PRIORITY 5

A vibrant, mixed-use and walkable 24-hour City Centre with the Georges River at its heart

PLANNING PRIORITY 6

High-quality, plentiful and accessible community facilities, open space and infrastructure aligned with growth

PLANNING PRIORITY 7

Housing choice for different needs, with density focused in the City Centre and centres well serviced by public transport

PLANNING PRIORITY 8

Community-focused low-scale suburbs where our unique local character and heritage are respected

PLANNING PRIORITY 9

Safe, healthy and inclusive places shaping the wellbeing of the Liverpool community

PLANNING PRIORITY 5

A vibrant, mixed-use and walkable 24-hour City Centre with the Georges River at its heart

Relationship to other plans and policies

Metropolitan Plan Direction	District Plan Priority	CSP Direction
3. A city for people 4. Housing the city 5. A city of great places 7. Jobs and skills for the city	3. Providing services and social infrastructure to meet people's changing needs 4. Fostering healthy, creative, culturally rich and socially connected communities 5. Providing housing supply, choice and affordability with access to jobs, services and public transport 6. Creating and renewing great places and local centres, and respecting the District's heritage 9. Growing and strengthening the metropolitan cluster 11. Growing investment, business opportunities and jobs in strategic centres	Generating opportunity Creating connection

Action	2019/20-2020/21	2021/22-2028/29	2029/30+
5.1 Review Development Control Plan (DCP) to ensure the 18-hour economy can be suitably protected from reverse amenity issues. (short term)	✓		
5.2 Incorporate community and cultural facilities in Liverpool Civic Place. (short term)	✓		
5.3 Review LEP and DCP to give effect to City Centre Public Domain Master Plan. (short term)	✓		
5.4 Review LEP to support development, community facilities and linkages at key Council-owned sites in the City Centre. (medium term)		✓	
5.5 Review LEP to ensure alignment and give effect to Woodward Place Masterplan. (medium to long term)		✓	✓

IMPLEMENTATION FOR LIVEABILITY

PLANNING PRIORITY 6

High-quality, plentiful and accessible community facilities, open space and infrastructure aligned with growth

Relationship to other plans and policies

Metropolitan Plan Direction	District Plan Priority	CSP Direction
3. A city for people 8. A city in its landscape	3. Providing services and social infrastructure to meet people's changing needs 4. Fostering healthy, creative, culturally rich and socially connected communities 18. Delivering high quality open space	Creating connection

Action	2019/20- 2020/21	2021/22- 2028/29	2029/30+
6.1 Advocate changes to contributions planning and seek alternative funding mechanisms to deliver high-quality facilities. (short term)	✓		
6.2 Redevelop Lighthorse Park into a district recreation and open space destination park, including a community centre, and active and passive open spaces. (medium term)		✓	
6.3 Review LEP to give effect to River Connections Program linking green space networks from Casula to Pleasure Point, improving accessibility and visual amenity. (medium to long term)		✓	✓
6.4 Establish a metropolitan-scale cultural/entertainment facility in the City Centre. (long term)			✓

PLANNING PRIORITY 7

Housing choice for different needs, with density focused in the City Centre and centres well serviced by public transport

Relationship to other plans and policies

Metropolitan Plan Direction	District Plan Priority	CSP Direction
4. Housing the city	5. Providing housing supply, choice and affordability with access to jobs, services and public transport	Generating opportunity

Action	2019/20-2020/21	2021/22-2028/29	2029/30+
7.1 Implement the Local Housing Strategy through amendments to the LEP. (short term)	✓		
7.2 Develop an Affordable Housing Contributions Scheme and amend LEP. (short term)	✓		
7.3 Partner with State Government to investigate the potential for master planned precincts (such as NSW Land and Housing Corporation properties in Warwick Farm) by rezoning land to improve and increase social and affordable housing. (short term)	✓		
7.4 Partner with State Government to review the Masterplan for Miller Town Centre. (short term).	✓		
7.5 Advocate to State Government for more investment in social and affordable housing. (short term)	✓		
7.6 Monitor, review and update the Local Housing Strategy to ensure sufficient and appropriate housing is delivered to meet community needs. (medium term)		✓	
7.7 Progress sustainable, high-density transit- and landscape-oriented development along the Fifteenth Avenue Smart Transit Corridor. (long term)			✓

IMPLEMENTATION

FOR LIVEABILITY

PLANNING PRIORITY 8

Community-focused low-scale suburbs where our unique local character and heritage are respected

Relationship to other plans and policies

Metropolitan Plan Direction	District Plan Priority	CSP Direction
5. A city of great places	6. Creating and renewing great places and local centres, and respecting the District's heritage	Strengthening and protecting our environment

Action	2019/20-2020/21	2021/22-2028/29	2029/30+
8.1 Amend LEP to implement findings of review of dwelling typologies and density around Moorebank Shopping Centre. (short term)	✓		
8.2 Investigate Local Character Statements and Local Character overlays for areas identified as requiring more fine-grain planning responses. (short term)	✓		
8.3 Review and update heritage provisions in LEP, and address anomalies. (short term)	✓		
8.4 Undertake design-led planning using placemaking principles for neighbourhood and district centres. (medium term)		✓	

PLANNING PRIORITY 9

Safe, healthy and inclusive places shaping the wellbeing of the Liverpool community

Relationship to other plans and policies

Metropolitan Plan Direction	District Plan Priority	CSP Direction
3. A city for people	4. Fostering healthy, creative, culturally rich and socially connected communities	Creating connection

Action	2019/20-2020/21	2021/22-2028/29	2029/30+
9.1 Amend DCP to reflect outcomes of climate resilience study. (short term)	✓		
9.2 Liaise with Fairfield and Canterbury Bankstown councils to implement active transport routes around Chipping Norton Lakes, including bridge and road connections. (medium term)		✓	

IMPLEMENTATION FOR PRODUCTIVITY

Measures:

- Jobs by industry
- Level of employment
- Gross Regional Product
- Vacancy rates
- Land zoned for employment purposes across various industry sectors
- Visitor numbers
- Number of new businesses opened/registered

PLANNING PRIORITY 10

A world-class health, education, research and innovation precinct

PLANNING PRIORITY 11

An attractive environment for local jobs, business, tourism and investment

PLANNING PRIORITY 12

Industrial and employment lands meet Liverpool's future needs

PLANNING PRIORITY 13

A viable 24-hour Western Sydney International Airport growing to reach its potential

PLANNING PRIORITY 10

A world-class health, education, research and innovation precinct

Relationship to other plans and policies

Metropolitan Plan Direction	District Plan Priority	CSP Direction
7. Jobs and skills for the city	9. Growing and strengthening the metropolitan cluster 11. Growing investment, business opportunities and jobs in strategic centres	Generating opportunity Leading through collaboration

Action	2019/20- 2020/21	2021/22- 2028/29	2029/30+
10.1 Amend LEP to support the operations and growth of the Liverpool Innovation Precinct. (short term)	✓		
10.2 Amend LEP applying to Warwick Farm to support the existing horse training facilities, and provide for innovation/employment uses and appropriately-located residential component. (short term)	✓		
10.3 Collaborate with universities, TAFE and other education providers to increase opportunities in the LGA. (short term)	✓		

IMPLEMENTATION FOR PRODUCTIVITY

PLANNING PRIORITY 11

An attractive environment for local jobs, business, tourism and investment

Relationship to other plans and policies

Metropolitan Plan Direction	District Plan Priority	CSP Direction
7. Jobs and skills for the city	8. Leveraging industry opportunities from the Western Sydney Airport and Badgerys Creek Aerotropolis 9. Growing and strengthening the metropolitan cluster 11. Growing investment, business opportunities and jobs in strategic centres	Generating opportunity

Action		2019/20- 2020/21	2021/22- 2028/29	2029/30+
11.1	Review LEP to align with Centres and Corridors study. (short term)	✓		
11.2	Amend LEP to rezone Georges River precinct north of Newbridge Road as a mixed-use zone to support the Liverpool CBD and Innovation Precinct, with an extensive open space system and cross-river linkages. (short term)	✓		
11.3	Pursue LEP changes to support innovation/research/health/advanced manufacturing in the Liverpool Innovation Precinct. (short term)	✓		
11.4	Pursue LEP changes necessary to support tourism and visitor accommodation. (short term)	✓		
11.5	Amend LEP to increase land-use flexibility for festival uses. (short term)	✓		
11.6	Work with TfNSW to bring forward extension of Sydney Metro City and Southwest and investigate a preferred alignment. (short term, with delivery in the long term)	✓		✓
11.7	Progress the Fifteenth Avenue Smart Transit Corridor project. (short term)	✓		
11.8	Advocate a fast rail service to the Liverpool City Centre from Sydney CBD, and enhanced integration with future rail links. (short term)	✓		
11.9	Review and update LEP and DCP to ensure statutory planning controls protect key freight routes and employment lands from sensitive land uses. (short to medium term)	✓	✓	
11.10	Review LEP and DCP to give effect to City Centre Public Domain Master Plan. (short to medium term)	✓	✓	
11.11	Work with Transport for NSW to create links from Liverpool Train Station to the Georges River and investigate opportunities for transport interchanges at Moore Point (CBD extension east of the Georges River). (medium term)		✓	

IMPLEMENTATION FOR PRODUCTIVITY

PLANNING PRIORITY 12

Industrial and employment lands meet Liverpool's future needs

Relationship to other plans and policies

Metropolitan Plan Direction	District Plan Priority	CSP Direction
7. Jobs and skills for the city	10. Maximising freight and logistics opportunities and planning and managing industrial and urban services land	Generating opportunity

Action		2019/20- 2020/21	2021/22- 2028/29	2029/30+
12.1	Review LEP to align with Industrial and Employment Lands Strategy. (short term)	✓		
12.2	Review LEP and DCP for employment lands to address a future transition to "new industries" in appropriate locations. (short term)	✓		
12.3	Review industrial land zones under LEP to enable innovative employment uses to support Liverpool Innovation Precinct. (short term)	✓		
12.4	Investigate provision of new industrial land, including light industrial (IN2), between the airport and the CBD, including extension of industrial zoned land in Austral, to ensure ongoing supply. (short to medium term)	✓	✓	

PLANNING PRIORITY 13

A viable 24-hour Western Sydney International Airport growing to reach its potential

Relationship to other plans and policies

Metropolitan Plan Direction	District Plan Priority	CSP Direction
5. A city of great places 6. A well connected city 7. Jobs and skills for the city	6. Creating and renewing great places and local centres, and respecting the District's heritage 7. Establishing the land use and transport structure to deliver a liveable, productive and sustainable Western Parkland City 8. Leveraging industry opportunities from the Western Sydney Airport and Badgerys Creek Aerotropolis	Generating opportunity Leading through collaboration

Action	2019/20-2020/21	2021/22-2028/29	2029/30+
13.1 Ensure through the Western Sydney Planning Partnership that future planning in the Aerotropolis supports the airport's economic potential and reduces conflicting uses that could inhibit future growth and the curfew free status of the airport. (short term)	✓		
13.2 Work collaboratively with the Western Sydney Planning Partnership to implement the Western Sydney City Deal and ensure the best planning outcomes for the Aerotropolis. (short to medium term)	✓	✓	

IMPLEMENTATION FOR SUSTAINABILITY

Measures:

- Tree canopy coverage
- Temperature in urban areas
- Environmental indicators
- Rural productivity and employment

PLANNING PRIORITY 14

Bushland and waterways are celebrated, connected, protected and enhanced

PLANNING PRIORITY 15

A green, sustainable, resilient and water-sensitive city

PLANNING PRIORITY 16

Rural lands are protected and enhanced

PLANNING PRIORITY 14

Bushland and waterways are celebrated, connected, protected and enhanced

Relationship to other plans and policies

Metropolitan Plan Direction	District Plan Priority	CSP Direction
8. A city in its landscape	12. Protecting and improving the health and enjoyment of the District's waterways 14. Protecting and enhancing bushland and biodiversity 15. Increasing urban tree canopy cover and delivering Green Grid connections	Strengthening and protecting our environment

Action	2019/20-2020/21	2021/22-2028/29	2029/30+
14.1 Review Environmentally Significant Land overlay in LEP to ensure protection of areas of high ecological conservation value. (short term)	✓		
14.2 Review LEP to ensure protection of biodiversity around waterways. (short term)	✓		
14.3 Review LEP to implement Green and Blue grid study findings. (short term)	✓		
14.4 Develop a strategy to increase tree canopy cover in the LGA. (short term)	✓		
14.5 Advocate protection corridor around Badgerys Creek. (short term)	✓		
14.6 Investigate potential koala protection corridor. (short term)	✓		
14.7 Develop a Strategic Urban Biodiversity Framework, dependent on finalisation of State Government's Greener Places policy. (short term)	✓		
14.8 Create green entryways to LGA along major road entry points. (medium term)		✓	

IMPLEMENTATION FOR SUSTAINABILITY

PLANNING PRIORITY 15

A green, sustainable, resilient and water-sensitive city

Relationship to other plans and policies

Metropolitan Plan Direction	District Plan Priority	CSP Direction
8. A city in its landscape 9. An efficient city 10. A resilient city	15. Increasing urban tree canopy cover and delivering Green Grid connections 19. Reducing carbon emissions and managing energy, water and waste efficiently 20. Adapting to the impacts of urban and natural hazards and climate change	Strengthening and protecting our environment

Action	2019/20- 2020/21	2021/22- 2028/29	2029/30+
15.1 Review LEP to suitably address sustainability in line with climate change study and resilience study. (short term)	✓		
15.2 Review LEP and DCP to address sustainable waste outcomes. (short term)	✓		
15.3 Review LEP and DCP to address the Urban Heat Island Effect. (short term)	✓		
15.4 Review DCP to encourage new commercial and industrial buildings to be rooftop solar ready. (short term)	✓		
15.5 Review DCP to prioritise low-carbon initiatives in future developments such as adaptive building designs, precinct-level car parking strategies and energy-efficient, water-efficient and energy generating precinct design. (short term)	✓		
15.6 Advocate for changes to Exempt and Complying Development Code to ensure tree canopy cover can be increased in line with State directives. (short term)	✓		
15.7 Advocate for increases to BASIX and Section J of the National Construction Code in line with the State Government's net zero by 2050 aspirations. (short term)	✓		

PLANNING PRIORITY 16

Rural lands are protected and enhanced

Relationship to other plans and policies

Metropolitan Plan Direction	District Plan Priority	CSP Direction
8. A city in its landscape	16. Protecting and enhancing scenic and cultural landscapes 17. Better managing rural areas	Strengthening and protecting our environment

Action	2019/20-2020/21	2021/22-2028/29	2029/30+
16.1 Review LEP to give effect to Rural Lands Study. (short term)	✓		
16.2 Review LEP and DCP to protect against development that detracts from Liverpool's scenic values, in line with findings of the Scenic Lands Study. (short term)	✓		
16.3 Investigate placemaking opportunities in Wallacia, including addressing transition of development controls from Liverpool LGA to Penrith LGA (medium term)		✓	
16.4 Review the Rural Lands Study every four years to ensure land use standards reflect trends in agriculture and can support the sensible growth of an agriculture industry to support opportunities provided by Western Sydney International Airport and to protect natural landforms and rural lifestyles. (medium to long term)		✓	✓





**LIVERPOOL
CITY
COUNCIL**



If you do not understand this document, please ring the Telephone Interpreter Service (131 450) and ask them to contact Council (1300 362 170). Office hours are 8.30am to 5.00pm, Monday to Friday.

ARABIC

إذا لم تستطع فهم هذا الطلب ، الرجاء الاتصال بخدمة الترجمة الهاتفية على رقم 131 450 واسألهم أن يتصلوا بالبلدية على رقم 1300 362 170 . دوام ساعات العمل هي من الساعة 8.30 صباحًا إلى 5.00 بعد الظهر من الاثنين إلى الجمعة.

CHINESE

如您看不懂此信 / 申請書，請打電話給「電話翻譯服務台」(131 450)，請他們聯絡市政廳(市政廳電話 1300 362 170)。市政廳辦公時間，星期一至星期五，上午八時三十分至下午五時。

CROATIAN

Ako ne razumijete ovo pismo/aplikaciju, molimo nazovite Službu prevodilaca i tumača (Translating and Interpreting Service - na broj 131 450) i zamolite ih da nazovu Općinu (na 1300 362 170). Radno vrijeme je od 8.30 ujutro do 5.00 popodne, od ponedjeljka do petka.

GERMAN

Wenn Sie diesen Brief/Antrag nicht verstehen können, rufen Sie bitte den Telefon Dolmetscher Dienst (Telephone Interpreter Service) (131 450) an und lassen Sie sich vom Personal mit dem Gemeinderat (Council) in Verbindung setzen (1300 362 170). Geschäftsstunden sind von 8:30 bis 17:00 Uhr, montags bis freitags.

GREEK

Αν δεν καταλαβαίνετε αυτή την επιστολή/αίτηση, σας παρακαλούμε να τηλεφωνήσετε στην Τηλεφωνική Υπηρεσία Διερμηνέων (131 450) και να τους ζητήσετε να επικοινωνήσουν με το Δημοτικό Συμβούλιο (1300 362 170). Τα γραφεία του είναι ανοιχτά από τις 8.30π.μ. μέχρι τις 5.00μ.μ. από Δευτέρα μέχρι και Παρασκευή.

HINDI

अगर आप इस पत्र/आवेदन को पढ़कर समझ नहीं पा रहे हैं तो कृपया टेलीफोन संवाद-सहायक सेवा (131 450) को फोन करें और उनसे काउंसिल (1300 362 170) से संपर्क करने को कहें। कार्यालय का समय सोमवार से शुक्रवार तक प्रातः ८:३० बजे से सायं ५:०० तक है।

ITALIAN

Se non comprendi questa lettera/questo modulo di domanda, telefona al Servizio traduzioni e interpreti al numero 131 450 chiedendo di essere messo in contatto con il Comune (telefono 1300 362 170). Orario d'ufficio: ore 8.30 -17.00, dal lunedì al venerdì.

KHMER

បើលោកអ្នកមិនយល់ពីអត្ថន័យឬការប្រតិបត្តិនេះទេ សូមទូរស័ព្ទទៅសេវាបកប្រែភាសាភាសាខ្មែរ (លេខ 131 450) ហើយស្នើសុំឲ្យគេទាក់ទងសាលាក្រុង (លេខ 1300 362 170)។ ពេលម៉ោងធ្វើការគឺម៉ោង 8 កន្លះព្រឹកដល់ម៉ោង 5 ល្ងាច ពីថ្ងៃច័ន្ទដល់ថ្ងៃសុក្រ

MACEDONIAN

Ako ne go razbirate ova pismo/aplikacija, ve molime da se javite vo Telefonската преведувачка служба на 131 450 и замолете ги да стапат во контакт со Општината на 1300 362 170. Работното време е од 8.30 часот наутро до 5.00 часот попладне од понеделник до петок.

MALTESE

Jekk ma tifhimx din l-ittra/applikazzjoni, jekk joghgbok ċempel lis-Servizz ta' l-Interpretu bit-Telefon (131 450) u itlobhom jikkuntattjaw il-Kunsill (1300 362 170). Il-hinijiet ta' l-Uffiċċju huma mit-8.30a.m. sal-5.00p.m., mit-Tnejn sal-Ġimgħa.

POLISH

Jeśli nie rozumiesz treści niniejszego pisma/podania, zadzwoń do Telefonicznego Biura Tłumaczy (Telephone Interpreter Service) pod numer 131 450 I poproś o telefoniczne skontaktowanie się z Radą Miejską pod numerem 1300 362 170. Godziny urzędowania: 08.30-17.00 od poniedziałku do piątku.

SERBIAN

Ako ne razumete ovo pismo/aplikaciju, molimo vas da nazovete Telefonsku prevodilačku službu (131 450) i zamolite ih da kontaktiraju Opštinu (1300 362 170). Radno vreme je od 8.30 ujutro do 5.00 popodne, od ponedeljka do petka.

SPANISH

Si Ud. no entiende esta carta/solicitud, por favor llame al Servicio Telefónico de Intérpretes (131 450) y pídale que llamen a la Municipalidad (Council) al 1300 362 170. Las horas de oficina son de 8:30 am a 5:00 pm, de lunes a viernes.

TURKISH

Bu mektubu veya müracaatı anlayamazsanız, lütfen Telefon Tercüme Servisi'ne (131 450) telefon ederek Belediye ile (1300 362 170) ilişkiye geçmelerini isteyiniz. Çalışma saatleri Pazartesi - Cuma günleri arasında sabah saat 8:30 ile akşam 5:00 arasındır.

VIETNAMESE

Nếu không hiểu thư/đơn này, xin Quý Vị gọi cho Telephone Interpreter Service (Dịch Vụ Thông Dịch Qua Điện Thoại), số 131 450, và nhờ họ liên lạc với Council (Hội Đồng), số 1300 362 170. Giờ làm việc là 8 giờ 30 sáng đến 5 giờ 00 chiều, Thứ Hai đến Thứ Sáu.



For further information



Visit Us

Customer Service Centre
Ground Floor, 33 Moore Street, Liverpool, NSW 2170
Open Monday - Friday, 8.30am - 5pm



Phone

1300 36 2170
Calling from interstate: (02) 8711 7000
National Relay Service (NRS): 133 677
(for hearing and speech impaired customers)



Email

lcc@liverpool.nsw.gov.au



Post

Locked Bag 7064, Liverpool BC, NSW 1871



Website

www.liverpool.nsw.gov.au



Subscribe

www.liverpool.nsw.gov.au/subscribe