



## Perspectives

# Designing Western Sydney Shaping Future Cities

A new blueprint for the economic transformation of Western Sydney, released December 2015. A plan to create 200,000 great new jobs by 2020.

One in ten Australians already live in Western Sydney, and one million more will live here by 2031. It is the third largest economy in Australia, contributing \$100 billion in 2013. Badgerys Creek will be the first new international airport built in Australia in over 50 years and there is \$35 billion of major infrastructure planned in the region. Despite the opportunities, issues around employment access, labour force skills and social disadvantage persist.

Deloitte has worked with business and government to create a blueprint for the economic transformation of Western Sydney: a vision that unites the multiple stakeholder perspectives on how to transform and restructure the region, in order to create 200,000 great new jobs by 2020.

*Shaping Future Cities: Designing Western Sydney* outlines how best to enable people to work, live and play in the Western Sydney area, rather than commuting to the Sydney CBD. This, in turn, will encourage residents to build strong local communities, which will create more jobs and a greater sense of local pride and prosperity. The blueprint ultimately provides an agreed action plan to make the vision a reality.

To develop the blueprint, Deloitte has facilitated a series of focus groups, guided by a Steering Committee and working with stakeholders from across Western Sydney.

Learn more about some of the challenges and opportunities facing Western Sydney by registering to receive our focus group workshop summary reports and a copy of the final blueprint.

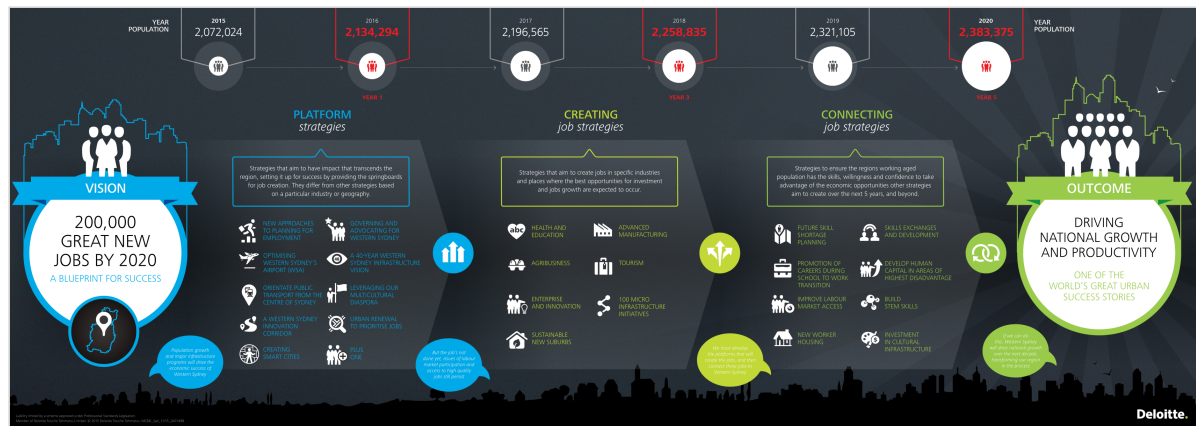
## Designing Western Sydney

Download the report



Explore the infographic





Shaping Future Cities:  
Designing Western Sydney

**Download the  
infographic**

Requires Adobe Reader

## Contact us



**Danny Rezek**  
Partner, Deloitte Private  
drezek@deloitte.com.au  
+61 2 9322 3889

in

Danny is the Managing Partner of Deloitte Western Sydney and leads a team of over 400 tax, accounting, corporate finance and consulting professionals. Prior to taking on the Managing Partner role Dann... More

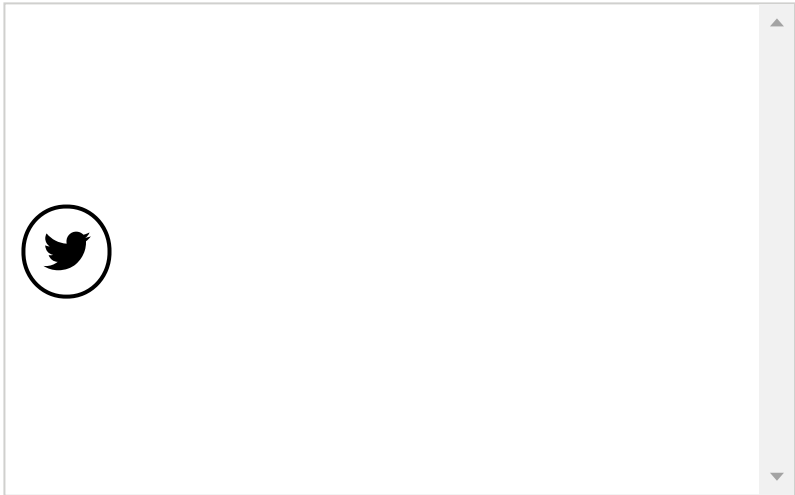


**Theo Psychogios**  
Partner, Financial advisory  
tpsychogios@deloitte.com.au  
+61 2 6175 2069

in

Theo has experience providing economic, policy, and commercial advice to public sector organisations and the private sector entities they engage with, particularly in the assessment and review of how ... More

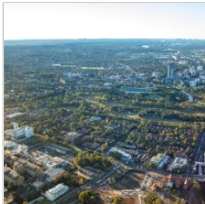




What do you think?  
@DeloitteNewsAU

Join the conversation  
on Twitter

Recommendations



Westmead  
Innovation  
District  
  
Building  
Western  
Sydney's jobs  
engine



Being bold on  
education,  
population  
growth and  
reform are  
keys to  
Tasmania's  
future  
  
Deloitte  
launches new  
report – Be  
BOLD Tasmania



Designing  
Western  
Sydney  
  
Shaping Future  
Cities



A more  
liveable  
Sydney  
  
What does a  
30-minute city  
mean for  
Sydney and  
how can we  
make it a  
reality?

Related topics

- City Solutions
- Western Sydney
- Economics
- Culture
- Property

Contact Deloitte

Submit RFP

Search jobs

© 2018. See Terms of Use for more information.  
Deloitte refers to one or more of Deloitte Touche Tohmatsu Limited, a UK private company limited by guarantee (“DTTL”), its network of member firms, and their related entities. DTTL and each of its member firms are legally separate and independent entities. DTTL (also referred to as “Deloitte Global”) does not provide services to clients. Please see About Deloitte to learn more about our global network of member firms.

<https://www.facebook.com/DeloitteAustralia/>

[https://twitter.com/Green\\_Dot](https://twitter.com/Green_Dot)

<https://www.linkedin.com/company/deloitte-australia>





<https://www.youtube.com/user/DeloitteAustralia>



<http://blog.deloitte.com.au/>