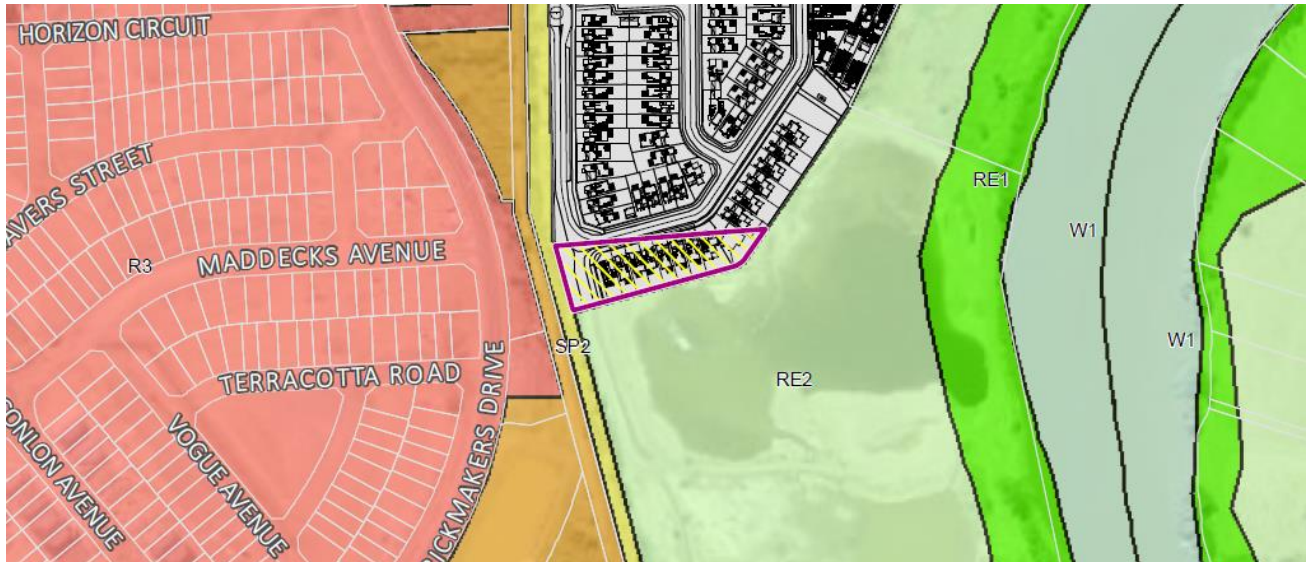


Liverpool Local Environmental Plan 2008 – Amendment 85 146 Newbridge Road, Moorebank

FACT
SHEET



Liverpool City Council is exhibiting Liverpool Local Environmental Plan 2008 (Amendment 85) and invites members of the public to provide feedback.

What is the Liverpool Local Environmental Plan (LEP)?

The LEP contains zoning and planning controls which guide development for most of the Liverpool Local Government Area. Some of the LEP controls include the types of development permitted on a particular site, including the floor space and height to which a development can be constructed.

What changes are proposed?

This proposal seeks to rezone a 4200m² portion of the site from RE2 (Private Recreation) to R3 (Medium Density Residential) and amend the floor space ratio (FSR), minimum lot size, and height of building (HOB) development standards in the LEP. This amendment aims to facilitate the development of 9 dwellings to the south of the 'Georges Cove' development.

How can I make a submission?

Written submissions are to be addressed to the A/CEO and can be sent to Locked Bag 7064, Liverpool BC NSW 1871; or lcc@liverpool.nsw.gov.au. Submissions are to be received by **5pm Friday 16 October 2020**, quoting **RZ-1/2019**.

Where can I get more information?

Visit Council's website for further information:

www.liverpool.nsw.gov.au/public-exhibitions

Enquiries about this proposal can be directed to Kweku Aikins, Strategic Planner, by phone on 8711 7416 or at aikinsk@liverpool.nsw.gov.au.

What happens next?

Public submissions for Draft Amendment 85 will be considered and reported to a future Council meeting.